

Certificate of Analysis

Product: Abies balsamea organic 4822

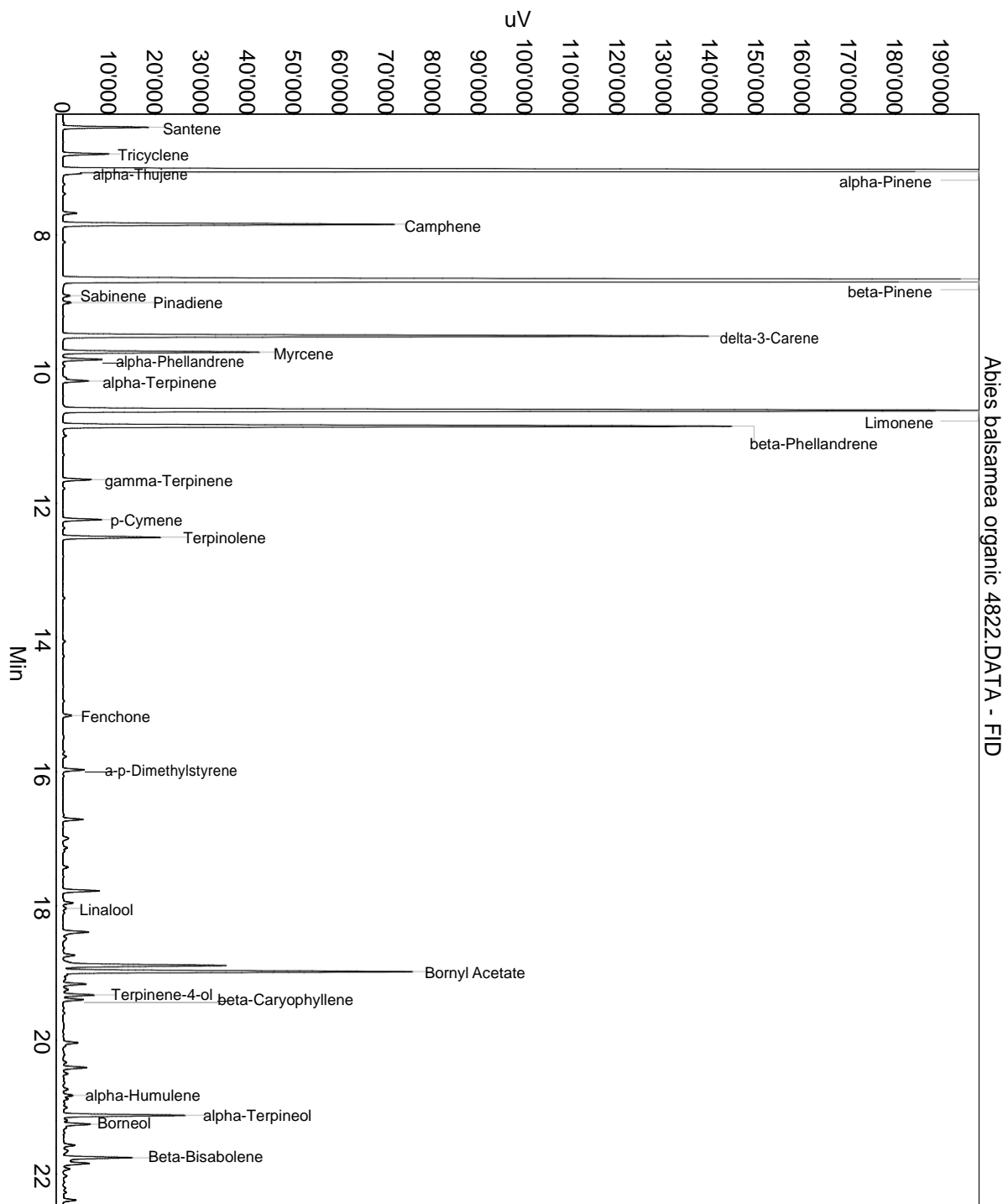
Lot: 4822

Date of analysis: 24.05.2019 13:36:00

System: GC-430 FID

Column: BGB Wax 60m / 0.25mm / 0.25um

Method: 180306 essential basis 60min



Abies balsamea organic 4822.DATA - FID

This data sheet was issued to the best of our knowledge and is supplied without warranty for its correctness or accuracy.

Certificate of Analysis

Product: Abies balsamea organic 4822

Lot: 4822

Date of analysis: 24.05.2019 13:36:00

System: GC-430 FID

Column: BGB Wax 60m / 0.25mm / 0.25um

Method: 180306 essential basis 60min

Index	Name	Time [Min]	Area [uV.Min]	Area % [%]	Allergene
1	Santene	6.40	493.3	0.748	
2	Tricyclene	6.79	285.5	0.433	
3	alpha-Pinene	7.04	15491.2	23.494	
4	alpha-Thujene	7.08	91.4	0.139	
5		7.68	89.3	0.135	
6	Camphene	7.84	2103.9	3.191	
7	beta-Pinene	8.69	19820.8	30.061	
8	Sabinene	8.91	49.9	0.076	
9	Pinadiene	9.01	57.0	0.086	
10	delta-3-Carene	9.51	4218.2	6.398	
11	Myrcene	9.75	1195.6	1.813	
12	alpha-Phellandrene	9.86	257.6	0.391	
13		9.95	14.1	0.021	
14		10.13	23.6	0.036	
15	alpha-Terpinene	10.18	173.7	0.263	
16	Limonene	10.62	7751.4	11.756	Directive 2003/15EC (7th)
17	beta-Phellandrene	10.85	4431.5	6.721	
18	gamma-Terpinene	11.65	188.8	0.286	
19	p-Cymene	12.24	258.9	0.393	
20	Terpinolene	12.51	641.0	0.972	
21	Fenchone	15.16	66.7	0.101	
22	a-p-Dimethylstyrene	15.97	150.8	0.229	
23		16.71	136.8	0.207	
24		16.99	54.0	0.082	
25		17.14	48.7	0.074	
26		17.43	37.7	0.057	
27		17.78	268.1	0.407	
28		17.96	76.0	0.115	
29	Linalool	18.04	38.0	0.058	Directive 2003/15EC (7th)
30		18.39	191.5	0.290	
31		18.42	23.6	0.036	
32		18.49	41.6	0.063	
33		18.74	87.4	0.133	
34		18.84	23.0	0.035	
35		18.89	1227.5	1.862	
36	Bornyl Acetate	18.98	2393.3	3.630	
37		19.08	28.6	0.043	
38		19.17	158.1	0.240	

This data sheet was issued to the best of our knowledge and is supplied without warranty for its correctness or accuracy.

Certificate of Analysis

Product: Abies balsamea organic 4822

Lot: 4822

Date of analysis: 24.05.2019 13:36:00

System: GC-430 FID

Column: BGB Wax 60m / 0.25mm / 0.25um

Method: 180306 essential basis 60min

Index	Name	Time [Min]	Area [uV.Min]	Area % [%]	Allergene
39		19.25	46.7	0.071	
40	Terpinene-4-ol	19.33	215.9	0.327	
41	beta-Caryophyllene	19.40	143.2	0.217	
42		20.04	110.4	0.167	
43		20.09	16.8	0.025	
44		20.33	27.0	0.041	
45		20.41	171.8	0.261	
46		20.50	33.4	0.051	
47		20.73	38.0	0.058	
48	alpha-Humulene	20.83	71.9	0.109	
49		20.88	34.0	0.052	
50	alpha-Terpineol	21.12	818.7	1.242	
51		21.20	21.9	0.033	
52	Borneol	21.26	188.4	0.286	
53		21.30	17.7	0.027	
54		21.57	89.3	0.135	
55		21.65	38.5	0.058	
56	Beta-Bisabolene	21.75	501.3	0.760	
57		21.84	211.9	0.321	
58		21.92	47.9	0.073	
59		22.39	94.9	0.144	
60		22.48	40.8	0.062	
61		22.60	85.2	0.129	
62		22.93	131.3	0.199	
63		23.00	25.0	0.038	
64		27.05	25.5	0.039	
Total			65935.3	100.000	

This data sheet was issued to the best of our knowledge and is supplied without warranty for its correctness or accuracy.