

Certificate of Analysis

Product: **Angelica archangelica 7351**

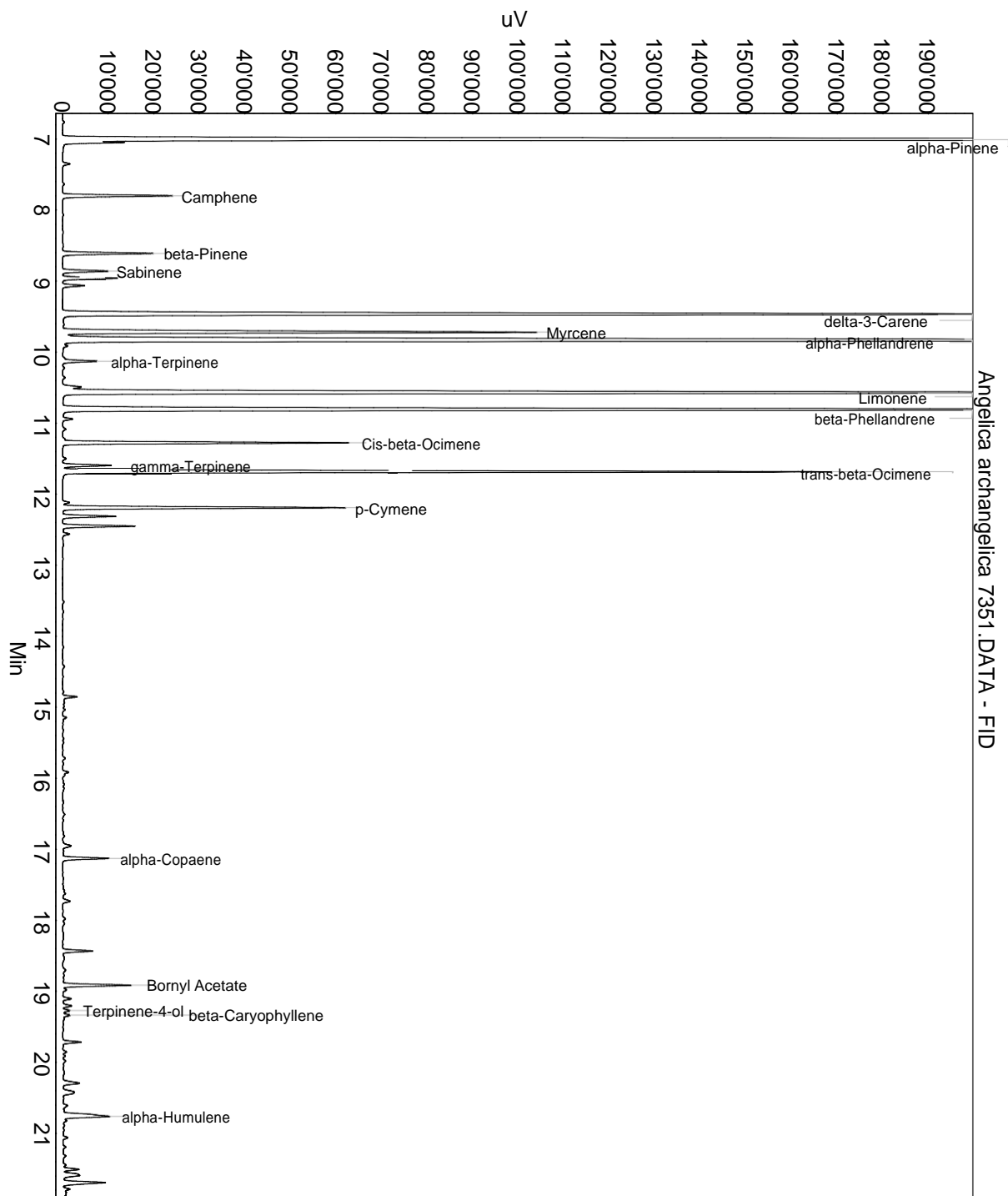
Lot: 7351

Date of analysis: 17.08.2020 20:43:22

System: GC-430 FID

Column: BGB Wax 60m / 0.25mm / 0.25um

Method: 180306 essential basis 60min



This data sheet was issued to the best of our knowledge and is supplied without warranty for its correctness or accuracy.

Certificate of Analysis

Product: **Angelica archangelica 7351**

Lot: 7351

Date of analysis: 17.08.2020 20:43:22

System: GC-430 FID

Column: BGB Wax 60m / 0.25mm / 0.25um

Method: 180306 essential basis 60min

Index	Name	Time [Min]	Area [uV.Min]	Area % [%]	Allergene
1	Santene	6.53	25.8	0.034	
2	alpha-Pinene	7.01	14599.9	19.436	
3		7.35	50.1	0.067	
4	Camphene	7.80	714.1	0.951	
5	beta-Pinene	8.61	607.6	0.809	
6	Sabinene	8.86	301.3	0.401	
7		8.96	368.2	0.490	
8		9.06	145.6	0.194	
9	delta-3-Carene	9.47	7970.8	10.611	
10	Myrcene	9.72	3412.4	4.543	
11	alpha-Phellandrene	9.84	13358.1	17.783	
12		9.91	37.9	0.050	
13	alpha-Terpinene	10.13	239.2	0.318	
14		10.49	146.9	0.196	
15	Limonene	10.57	9429.0	12.553	Directive 2003/15EC (7th)
16	beta-Phellandrene	10.81	9342.3	12.437	
17		10.94	68.2	0.091	
18	Cis-beta-Ocimene	11.28	1808.7	2.408	
19		11.50	23.9	0.032	
20	gamma-Terpinene	11.60	322.8	0.430	
21	trans-beta-Ocimene	11.69	5068.9	6.748	
22		12.12	46.2	0.062	
23	p-Cymene	12.19	1866.1	2.484	
24		12.31	355.0	0.473	
25		12.45	486.9	0.648	
26		12.56	46.9	0.062	
27		14.85	106.3	0.142	
28		15.15	28.2	0.038	
29		15.92	57.3	0.076	
30		16.95	78.9	0.105	
31	alpha-Copaene	17.13	326.8	0.435	
32		17.73	63.5	0.085	
33		18.43	203.9	0.272	
34		18.52	24.0	0.032	
35	Bornyl Acetate	18.92	462.5	0.616	
36		18.98	24.0	0.032	
37		19.10	59.5	0.079	
38		19.21	65.4	0.087	

This data sheet was issued to the best of our knowledge and is supplied without warranty for its correctness or accuracy.

Certificate of Analysis

Product: **Angelica archangelica 7351**

Lot: 7351

Date of analysis: 17.08.2020 20:43:22

System: GC-430 FID

Column: BGB Wax 60m / 0.25mm / 0.25um

Method: 180306 essential basis 60min

Index	Name	Time [Min]	Area [uV.Min]	Area % [%]	Allergene
39	Terpinene-4-ol	19.27	49.7	0.066	
40	beta-Caryophyllene	19.34	54.6	0.073	
41		19.71	130.3	0.173	
42		19.86	26.5	0.035	
43		19.91	15.1	0.020	
44		19.98	25.1	0.033	
45		20.29	153.7	0.205	
46		20.42	77.0	0.103	
47		20.43	67.7	0.090	
48		20.61	49.7	0.066	
49		20.74	157.7	0.210	
50	alpha-Humulene	20.76	353.3	0.470	
51		20.82	38.7	0.052	
52		21.06	33.6	0.045	
53		21.51	101.8	0.136	
54		21.58	66.2	0.088	
55		21.59	111.2	0.148	
56		21.69	346.8	0.462	
57		21.79	46.8	0.062	
58		21.83	44.1	0.059	
59		21.96	110.0	0.146	
60		22.32	23.5	0.031	
61		22.52	25.4	0.034	
62		22.58	23.8	0.032	
63		23.74	68.3	0.091	
64		25.94	26.9	0.036	
65		26.10	33.2	0.044	
66		27.32	209.8	0.279	
67		27.36	19.6	0.026	
68		27.74	75.0	0.100	
69		27.93	84.0	0.112	
70		28.46	36.0	0.048	
71		29.60	43.4	0.058	
72		30.51	44.2	0.059	
Total			75115.8	100.000	

This data sheet was issued to the best of our knowledge and is supplied without warranty for its correctness or accuracy.