

Certificate of Analysis

Product: **Cedrus atlantica organic 7381**

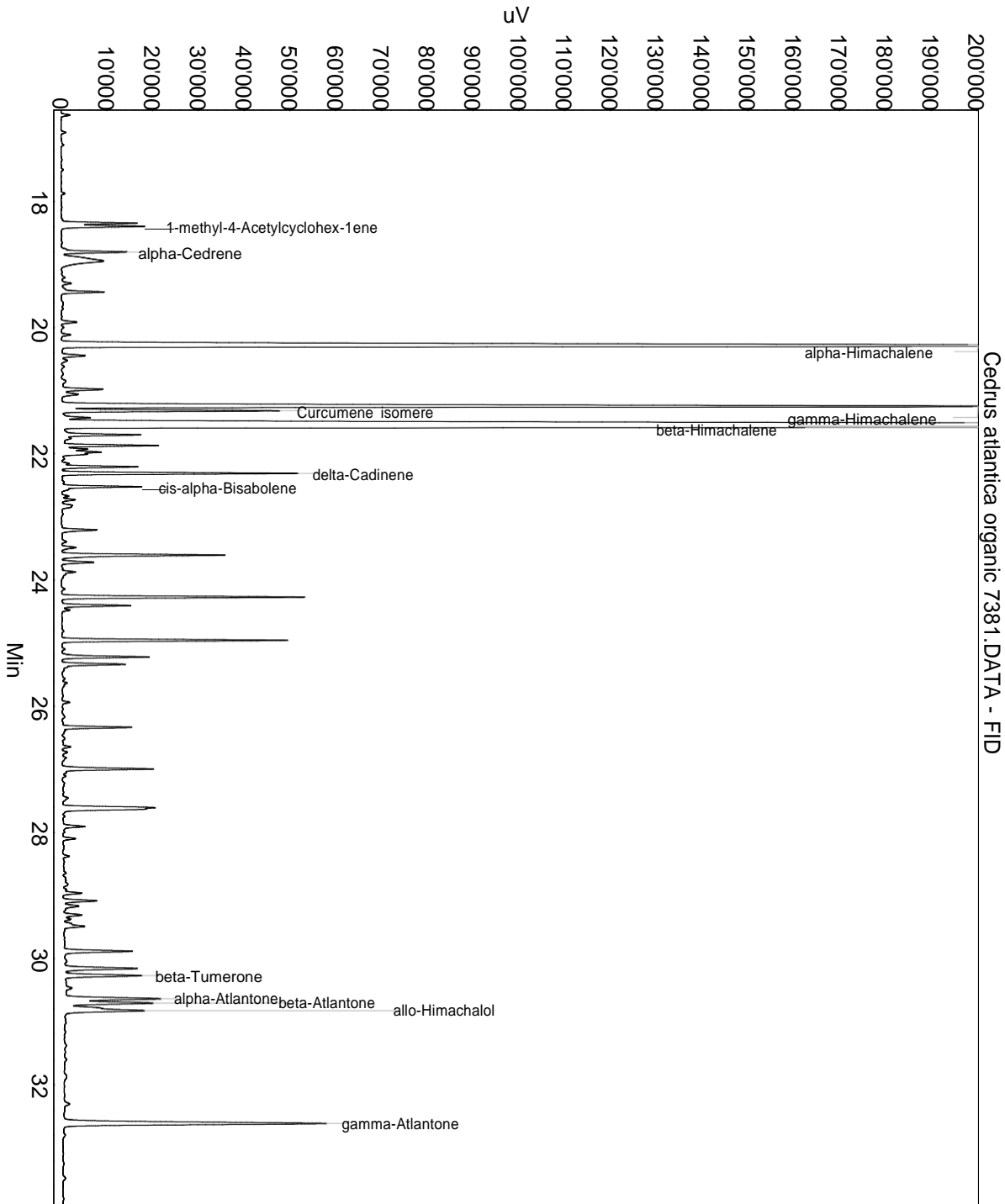
Lot: 7381

Date of analysis: 24.08.2020 11:15:47

System: GC-430 FID

Column: BGB Wax 60m / 0.25mm / 0.25um

Method: 180306 essential basis 60min



This data sheet was issued to the best of our knowledge and is supplied without warranty for its correctness or accuracy.

Certificate of Analysis

Product: **Cedrus atlantica organic 7381**

Lot: 7381

Date of analysis: 24.08.2020 11:15:47

System: GC-430 FID

Column: BGB Wax 60m / 0.25mm / 0.25um

Method: 180306 essential basis 60min

Index	Name	Time [Min]	Area [uV.Min]	Area % [%]	Allergene
1	Pinadiene	9.11	24.8	0.027	
2		16.63	62.6	0.069	
3		16.91	35.0	0.038	
4		17.87	26.2	0.029	
5		18.35	532.0	0.584	
6	1-methyl-4-Acetylcyclohex-1ene	18.39	597.4	0.656	
7	alpha-Cedrene	18.80	511.6	0.562	
8		18.90	181.1	0.199	
9		18.94	722.0	0.793	
10		19.30	78.9	0.087	
11		19.44	335.5	0.368	
12		19.91	116.7	0.128	
13		20.00	19.9	0.022	
14		20.11	67.0	0.074	
15	alpha-Himachalene	20.29	14038.1	15.413	
16		20.44	201.7	0.221	
17		20.52	59.7	0.066	
18		20.62	23.3	0.026	
19		20.85	57.2	0.063	
20		20.98	349.4	0.384	
21		21.06	168.6	0.185	
22	gamma-Himachalene	21.25	8585.4	9.426	
23	Curcumene isomere	21.32	1446.2	1.588	
24		21.43	222.3	0.244	
25	beta-Himachalene	21.57	38431.8	42.196	
26		21.70	727.1	0.798	
27		21.87	661.7	0.726	
28		21.93	185.8	0.204	
29		21.97	451.8	0.496	
30		22.08	24.1	0.026	
31		22.21	579.5	0.636	
32	delta-Cadinene	22.31	1605.4	1.763	
33		22.45	25.0	0.027	
34	cis-alpha-Bisabolene	22.52	579.4	0.636	
35		22.67	46.6	0.051	
36		22.73	99.0	0.109	
37		22.82	130.6	0.143	
38		23.21	299.5	0.329	

This data sheet was issued to the best of our knowledge and is supplied without warranty for its correctness or accuracy.

Certificate of Analysis

Product: **Cedrus atlantica organic 7381**

Lot: 7381

Date of analysis: 24.08.2020 11:15:47

System: GC-430 FID

Column: BGB Wax 60m / 0.25mm / 0.25um

Method: 180306 essential basis 60min

Index	Name	Time [Min]	Area [uV.Min]	Area % [%]	Allergene
39		23.39	42.6	0.047	
40		23.49	123.3	0.135	
41		23.61	1271.0	1.395	
42		23.72	246.9	0.271	
43		23.87	140.3	0.154	
44		24.14	25.4	0.028	
45		24.27	1689.0	1.854	
46		24.40	495.4	0.544	
47		24.48	63.2	0.069	
48		24.96	1598.2	1.755	
49		25.22	649.8	0.713	
50		25.34	495.3	0.544	
51		25.63	41.9	0.046	
52		25.94	56.7	0.062	
53		26.33	517.3	0.568	
54		26.64	54.5	0.060	
55		26.73	40.3	0.044	
56		26.99	764.4	0.839	
57		27.11	26.2	0.029	
58		27.46	62.1	0.068	
59		27.61	655.9	0.720	
60		27.63	527.1	0.579	
61		27.91	195.9	0.215	
62		28.10	95.3	0.105	
63		28.38	48.1	0.053	
64		28.91	23.0	0.025	
65		28.96	149.1	0.164	
66		29.08	281.8	0.309	
67		29.17	168.7	0.185	
68		29.31	164.4	0.180	
69		29.38	62.0	0.068	
70		29.49	247.1	0.271	
71		29.88	570.1	0.626	
72		30.16	664.6	0.730	
73	beta-Tumerone	30.27	672.1	0.738	
74		30.47	88.8	0.098	
75	alpha-Atlantone	30.64	914.6	1.004	
76	beta-Atlantone	30.70	825.4	0.906	

This data sheet was issued to the best of our knowledge and is supplied without warranty for its correctness or accuracy.

Certificate of Analysis

Product: **Cedrus atlantica organic 7381**

Lot: 7381

Date of analysis: 24.08.2020 11:15:47

System: GC-430 FID

Column: BGB Wax 60m / 0.25mm / 0.25um

Method: 180306 essential basis 60min

Index	Name	Time [Min]	Area [uV.Min]	Area % [%]	Allergene
77		30.79	250.2	0.275	
78	allo-Himachalol	30.83	786.9	0.864	
79		32.30	56.0	0.061	
80	gamma-Atlantone	32.61	2791.2	3.065	
81		35.37	127.2	0.140	
Total			91079.5	100.000	

This data sheet was issued to the best of our knowledge and is supplied without warranty for its correctness or accuracy.