

# Certificate of Analysis

Product: **Cinnamomum camphora organic 4692**

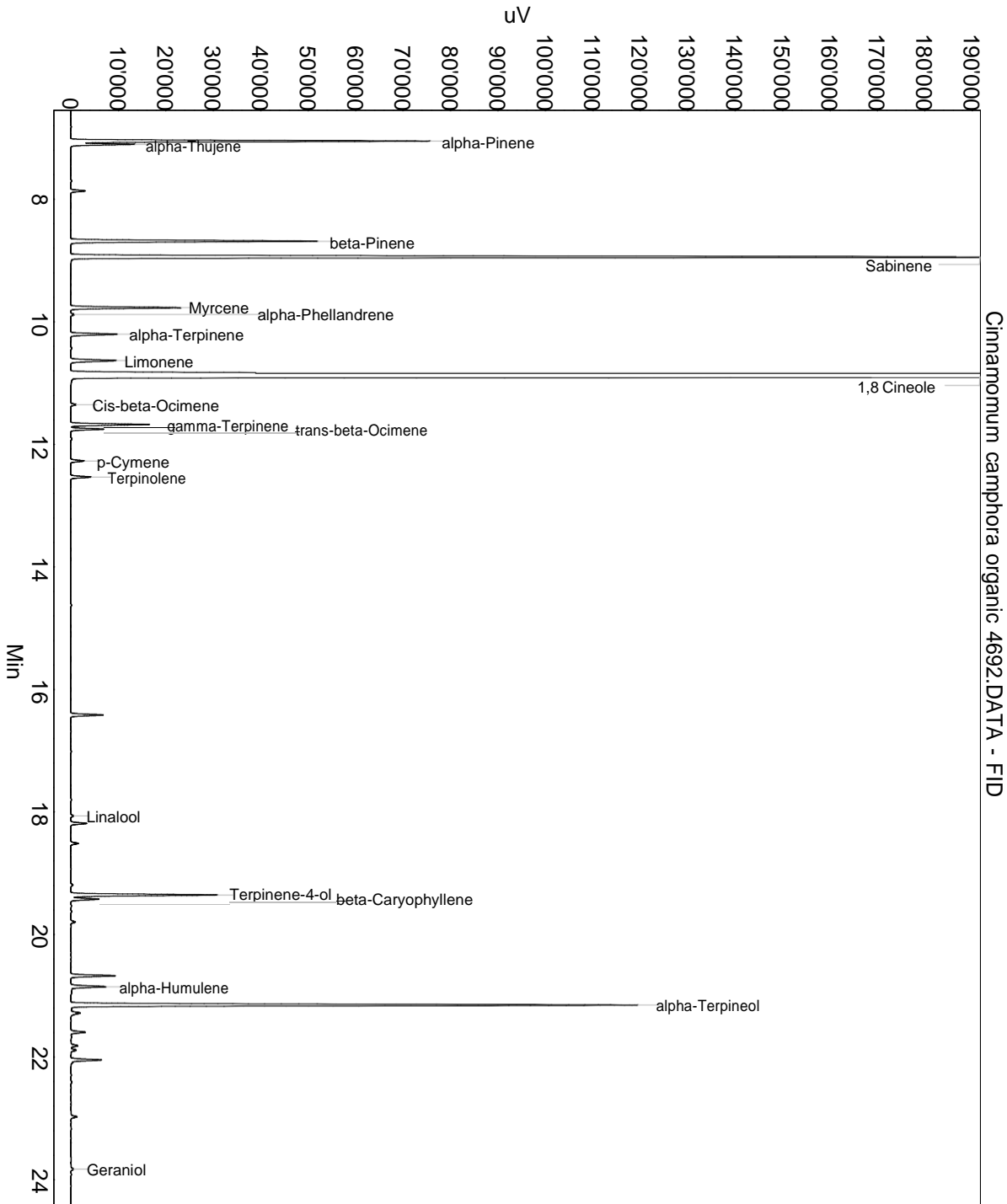
Lot: 4692

Date of analysis: 08.05.2019 20:00:35

System: GC-430 FID

Column: BGB Wax 60m / 0.25mm / 0.25um

Method: 180306 essential basis 60min



This data sheet was issued to the best of our knowledge and is supplied without warranty for its correctness or accuracy.

## Certificate of Analysis

Product: **Cinnamomum camphora organic 4692**

Lot: 4692

Date of analysis: 08.05.2019 20:00:35

System: GC-430 FID

Column: BGB Wax 60m / 0.25mm / 0.25um

Method: 180306 essential basis 60min

Index	Name	Time [Min]	Area [uV.Min]	Area % [%]	Allergene
1	alpha-Pinene	7.05	2127.0	4.174	
2	alpha-Thujene	7.10	367.9	0.722	
3		7.86	92.0	0.181	
4	beta-Pinene	8.68	1588.8	3.118	
5	Sabinene	8.94	7085.4	13.905	
6	Myrcene	9.77	671.7	1.318	
7	alpha-Phellandrene	9.88	23.9	0.047	
8	alpha-Terpinene	10.20	305.1	0.599	
9	Limonene	10.63	339.1	0.666	Directive 2003/15EC (7th)
10	1,8 Cineole	10.89	30978.2	60.795	
11	Cis-beta-Ocimene	11.35	34.2	0.067	
12	gamma-Terpinene	11.68	500.2	0.982	
13	trans-beta-Ocimene	11.75	203.8	0.400	
14	p-Cymene	12.27	89.9	0.176	
15	Terpinolene	12.53	134.5	0.264	
16		16.42	211.3	0.415	
17	Linalool	18.06	19.4	0.038	Directive 2003/15EC (7th)
18		18.19	105.8	0.208	
19		18.51	50.6	0.099	
20	Terpinene-4-ol	19.36	969.6	1.903	
21	beta-Caryophyllene	19.42	190.2	0.373	
22		19.80	31.1	0.061	
23		20.67	293.3	0.576	
24	alpha-Humulene	20.85	244.7	0.480	
25	alpha-Terpineol	21.15	3754.2	7.368	
26		21.28	79.6	0.156	
27		21.59	99.9	0.196	
28		21.82	49.3	0.097	
29		21.89	39.3	0.077	
30		22.05	214.9	0.422	
31		22.97	40.8	0.080	
32	Geraniol	23.83	19.7	0.039	Directive 2003/15EC (7th)
Total			50955.4	100.000	

This data sheet was issued to the best of our knowledge and is supplied without warranty for its correctness or accuracy.

# Certificate of Analysis

Product: Cinnamomum camphora organic 6502

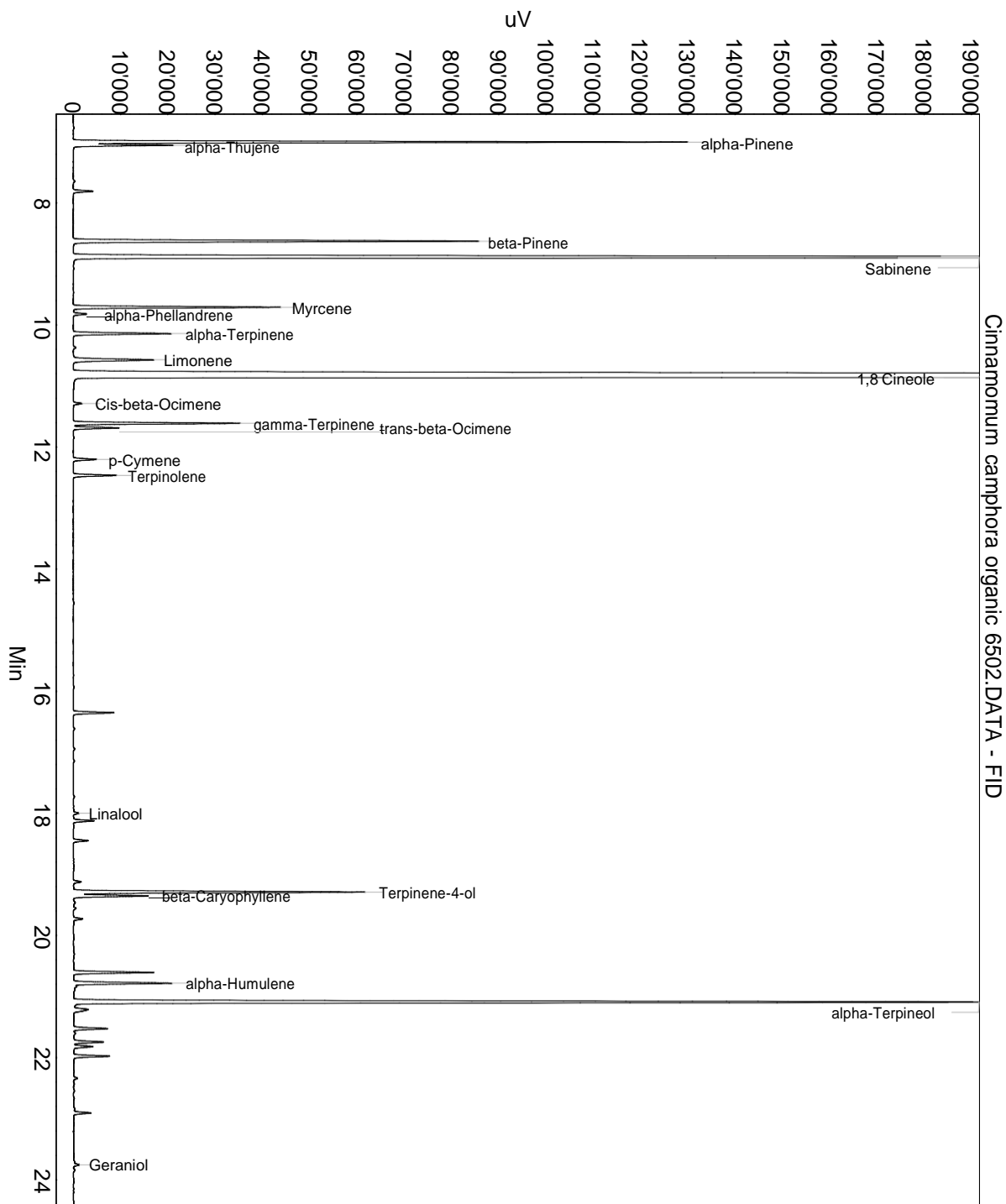
Lot: 6502

Date of analysis: 27.03.2020 14:19:18

System: GC-430 FID

Column: BGB Wax 60m / 0.25mm / 0.25um

Method: 180306 essential basis 60min



This data sheet was issued to the best of our knowledge and is supplied without warranty for its correctness or accuracy.

## Certificate of Analysis

Product: Cinnamomum camphora organic 6502

Lot: 6502

Date of analysis: 27.03.2020 14:19:18

System: GC-430 FID

Column: BGB Wax 60m / 0.25mm / 0.25um

Method: 180306 essential basis 60min

Index	Name	Time [Min]	Area [uV.Min]	Area % [%]	Allergene
1	alpha-Pinene	7.00	3636.5	4.710	
2	alpha-Thujene	7.06	569.6	0.738	
3		7.81	125.0	0.162	
4	beta-Pinene	8.63	2632.0	3.409	
5	Sabinene	8.89	11109.7	14.390	
6	Myrcene	9.71	1264.9	1.638	
7	alpha-Phellandrene	9.82	87.2	0.113	
8	alpha-Terpinene	10.14	638.9	0.828	
9	Limonene	10.57	644.5	0.835	Directive 2003/15EC (7th)
10	1,8 Cineole	10.85	42233.5	54.704	
11	Cis-beta-Ocimene	11.29	55.8	0.072	
12	gamma-Terpinene	11.61	1058.5	1.371	
13	trans-beta-Ocimene	11.69	281.0	0.364	
14	p-Cymene	12.20	153.6	0.199	
15	Terpinolene	12.46	281.3	0.364	
16		16.35	263.5	0.341	
17	Linalool	18.00	33.1	0.043	Directive 2003/15EC (7th)
18		18.12	138.2	0.179	
19		18.45	98.5	0.128	
20		19.12	53.1	0.069	
21	Terpinene-4-ol	19.29	1928.3	2.498	
22	beta-Caryophyllene	19.35	502.2	0.651	
23		19.73	63.4	0.082	
24		20.61	529.3	0.686	
25	alpha-Humulene	20.78	684.6	0.887	
26	alpha-Terpineol	21.09	6978.6	9.039	
27		21.21	148.6	0.192	
28		21.53	233.5	0.302	
29		21.75	211.0	0.273	
30		21.82	138.3	0.179	
31		21.98	244.5	0.317	
32		22.91	110.6	0.143	
33	Geraniol	23.76	39.5	0.051	Directive 2003/15EC (7th)
34		27.95	32.4	0.042	
Total			77203.3	100.000	

This data sheet was issued to the best of our knowledge and is supplied without warranty for its correctness or accuracy.