

# Certificate of Analysis

Product: **Citrus reticulata 6002**

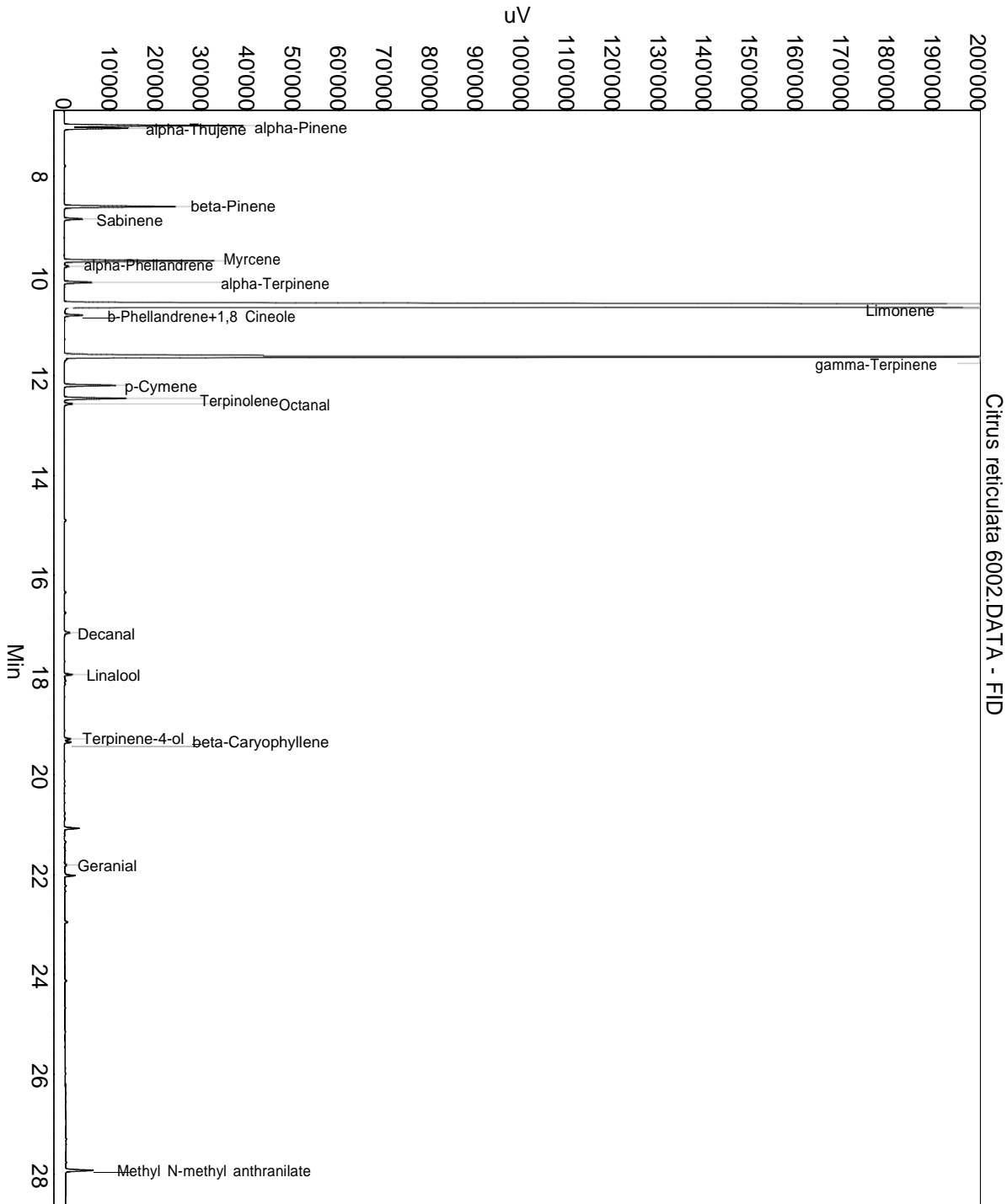
Lot: 6002

Date of analysis: 18.12.2019 19:39:33

System: GC-430 FID

Column: BGB Wax 60m / 0.25mm / 0.25um

Method: 180306 essential basis 60min



This data sheet was issued to the best of our knowledge and is supplied without warranty for its correctness or accuracy.

## Certificate of Analysis

Product: **Citrus reticulata 6002**

Lot: 6002

Date of analysis: 18.12.2019 19:39:33

System: GC-430 FID

Column: BGB Wax 60m / 0.25mm / 0.25um

Method: 180306 essential basis 60min

Index	Name	Time [Min]	Area [uV.Min]	Area % [%]	Allergene
1	alpha-Pinene	6.99	1082.3	1.915	
2	alpha-Thujene	7.04	381.2	0.675	
3	beta-Pinene	8.61	737.9	1.306	
4	Sabinene	8.86	122.4	0.217	
5	Myrcene	9.70	948.4	1.678	
6	alpha-Phellandrene	9.81	33.2	0.059	
7	alpha-Terpinene	10.13	191.1	0.338	
8	Limonene	10.62	42344.1	74.931	Directive 2003/15EC (7th)
9	b-Phellandrene+1,8 Cineole	10.80	113.1	0.200	
10	gamma-Terpinene	11.62	8998.9	15.924	
11	p-Cymene	12.19	345.3	0.611	
12	Terpinolene	12.46	411.6	0.728	
13	Octanal	12.57	57.5	0.102	
14	Decanal	17.15	47.4	0.084	
15	Linalool	17.99	55.0	0.097	Directive 2003/15EC (7th)
16	Terpinene-4-ol	19.28	48.7	0.086	
17	beta-Caryophyllene	19.34	48.3	0.085	
18		21.07	101.3	0.179	
19	Geranial	21.81	16.0	0.028	(= Citral ) Directive 2003/15EC (7th)
20		22.02	61.7	0.109	
21	Methyl N-methyl anthranilate	27.92	206.9	0.366	
22	alpha-Sinensal	32.60	158.2	0.280	
Total			56510.6	100.000	

This data sheet was issued to the best of our knowledge and is supplied without warranty for its correctness or accuracy.