

Certificate of Analysis

Product: **Commiphora erythraea 2158**

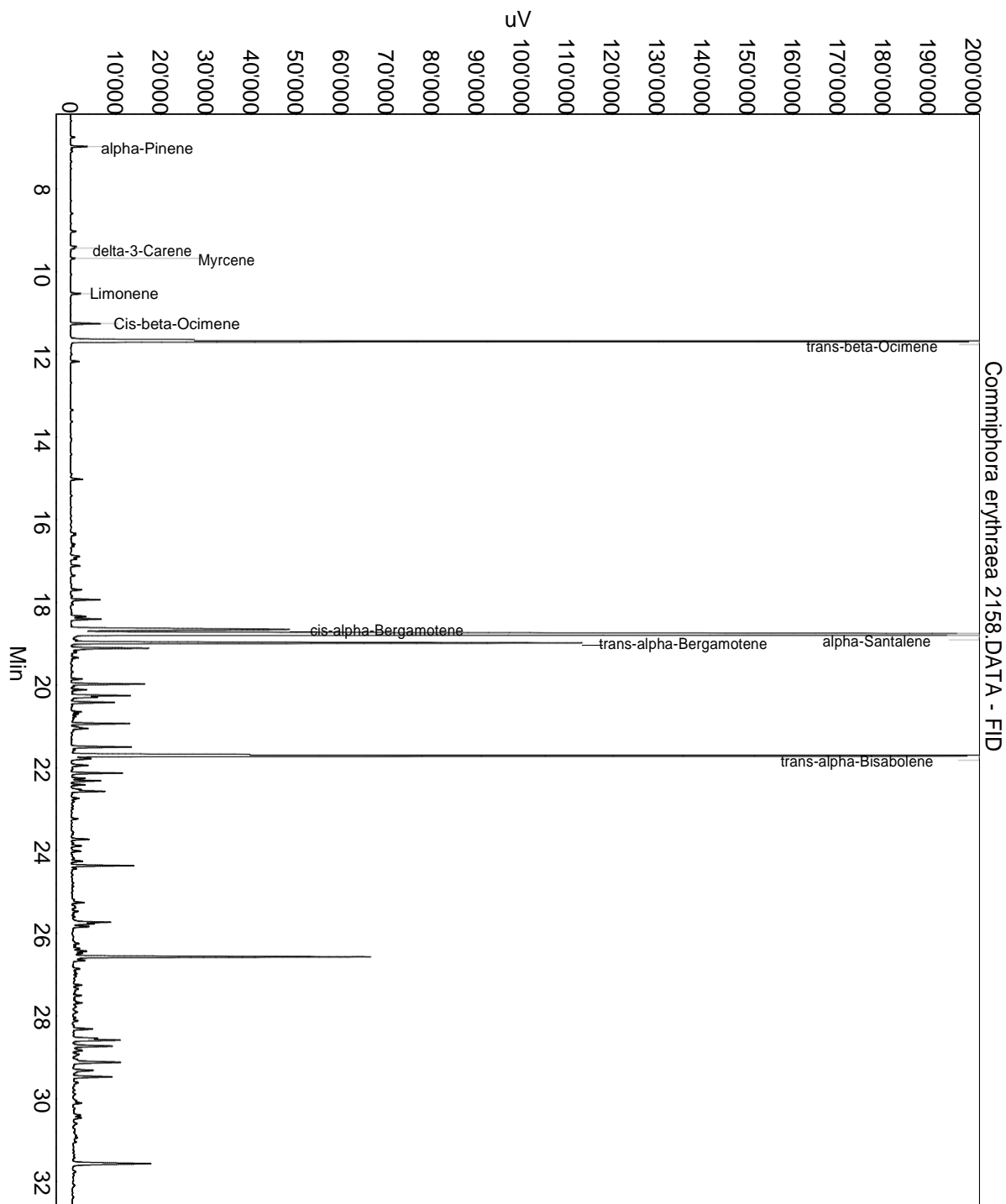
Lot: 2158

Date of analysis: 01.09.2020 11:24:33

System: GC-430 FID

Column: BGB Wax 60m / 0.25mm / 0.25um

Method: 180306 essential basis 60min



This data sheet was issued to the best of our knowledge and is supplied without warranty for its correctness or accuracy.

Certificate of Analysis

Product: **Commiphora erythraea 2158**

Lot: 2158

Date of analysis: 01.09.2020 11:24:33

System: GC-430 FID

Column: BGB Wax 60m / 0.25mm / 0.25um

Method: 180306 essential basis 60min

Index	Name	Time [Min]	Area [uV.Min]	Area % [%]	Allergene
1		6.75	29.5	0.047	
2	alpha-Pinene	6.98	105.6	0.170	
3		9.03	40.0	0.064	
4		9.40	33.7	0.054	
5	delta-3-Carene	9.43	21.7	0.035	
6	Myrcene	9.68	34.7	0.056	
7	Limonene	10.53	75.5	0.121	Directive 2003/15EC (7th)
8	Cis-beta-Ocimene	11.26	196.7	0.316	
9	trans-beta-Ocimene	11.69	13831.2	22.210	
10		12.17	58.5	0.094	
11		15.02	86.1	0.138	
12		16.33	25.0	0.040	
13		16.37	18.6	0.030	
14		16.59	30.1	0.048	
15		16.64	23.1	0.037	
16		16.89	92.7	0.149	
17		16.95	48.7	0.078	
18		17.11	68.7	0.110	
19		17.35	32.7	0.052	
20		17.69	78.5	0.126	
21		17.93	196.3	0.315	
22		18.34	126.2	0.203	
23		18.40	223.9	0.360	
24	cis-alpha-Bergamotene	18.66	2408.0	3.867	
25	alpha-Santalene	18.78	17842.9	28.652	
26	trans-alpha-Bergamotene	18.98	3636.6	5.840	
27		19.11	578.1	0.928	
28		19.21	47.3	0.076	
29		19.34	27.1	0.044	
30		19.85	75.7	0.122	
31		19.97	527.5	0.847	
32		20.11	106.2	0.171	
33		20.17	14.2	0.023	
34		20.25	431.0	0.692	
35		20.29	161.8	0.260	
36		20.42	325.6	0.523	
37		20.65	63.8	0.102	
38		20.69	39.6	0.064	

This data sheet was issued to the best of our knowledge and is supplied without warranty for its correctness or accuracy.

Certificate of Analysis

Product: **Commiphora erythraea 2158**

Lot: 2158

Date of analysis: 01.09.2020 11:24:33

System: GC-430 FID

Column: BGB Wax 60m / 0.25mm / 0.25um

Method: 180306 essential basis 60min

Index	Name	Time [Min]	Area [uV.Min]	Area % [%]	Allergene
39		20.75	34.3	0.055	
40		20.93	391.3	0.628	
41		21.05	152.1	0.244	
42		21.50	445.8	0.716	
43		21.56	47.0	0.075	
44	trans-alpha-Bisabolene	21.71	10201.7	16.382	
45		21.78	206.9	0.332	
46		21.94	166.1	0.267	
47		22.13	362.4	0.582	
48		22.26	97.7	0.157	
49		22.31	204.7	0.329	
50		22.41	96.3	0.155	
51		22.57	299.9	0.482	
52		22.74	52.4	0.084	
53		23.23	44.8	0.072	
54		23.73	126.4	0.203	
55		23.89	49.6	0.080	
56		24.02	74.6	0.120	
57		24.26	81.5	0.131	
58		24.37	433.0	0.695	
59		24.44	42.0	0.067	
60		25.26	81.3	0.131	
61		25.47	24.1	0.039	
62		25.73	437.9	0.703	
63		25.84	123.2	0.198	
64		26.25	42.5	0.068	
65		26.37	54.4	0.087	
66		26.43	104.1	0.167	
67		26.49	74.2	0.119	
68		26.57	2068.8	3.322	
69		26.66	98.6	0.158	
70		26.86	59.4	0.095	
71		27.26	67.0	0.108	
72		27.35	52.4	0.084	
73		27.40	25.1	0.040	
74		27.51	72.0	0.116	
75		27.68	77.7	0.125	
76		27.91	58.5	0.094	

This data sheet was issued to the best of our knowledge and is supplied
without warranty for its correctness or accuracy.

Certificate of Analysis

Product: **Commiphora erythraea 2158**

Lot: 2158

Date of analysis: 01.09.2020 11:24:33

System: GC-430 FID

Column: BGB Wax 60m / 0.25mm / 0.25um

Method: 180306 essential basis 60min

Index	Name	Time [Min]	Area [uV.Min]	Area % [%]	Allergene
77		28.12	37.3	0.060	
78		28.32	165.5	0.266	
79		28.54	175.5	0.282	
80		28.59	374.5	0.601	
81		28.73	349.8	0.562	
82		28.84	99.5	0.160	
83		28.93	73.8	0.118	
84		29.12	504.2	0.810	
85		29.32	202.7	0.326	
86		29.47	333.0	0.535	
87		29.61	63.0	0.101	
88		30.11	52.2	0.084	
89		30.40	67.5	0.108	
90		30.46	75.1	0.121	
91		31.57	806.5	1.295	
Total			62275.2	100.000	

This data sheet was issued to the best of our knowledge and is supplied
without warranty for its correctness or accuracy.