

# Certificate of Analysis

Product: **Cupressus sempervirens organic 4951**

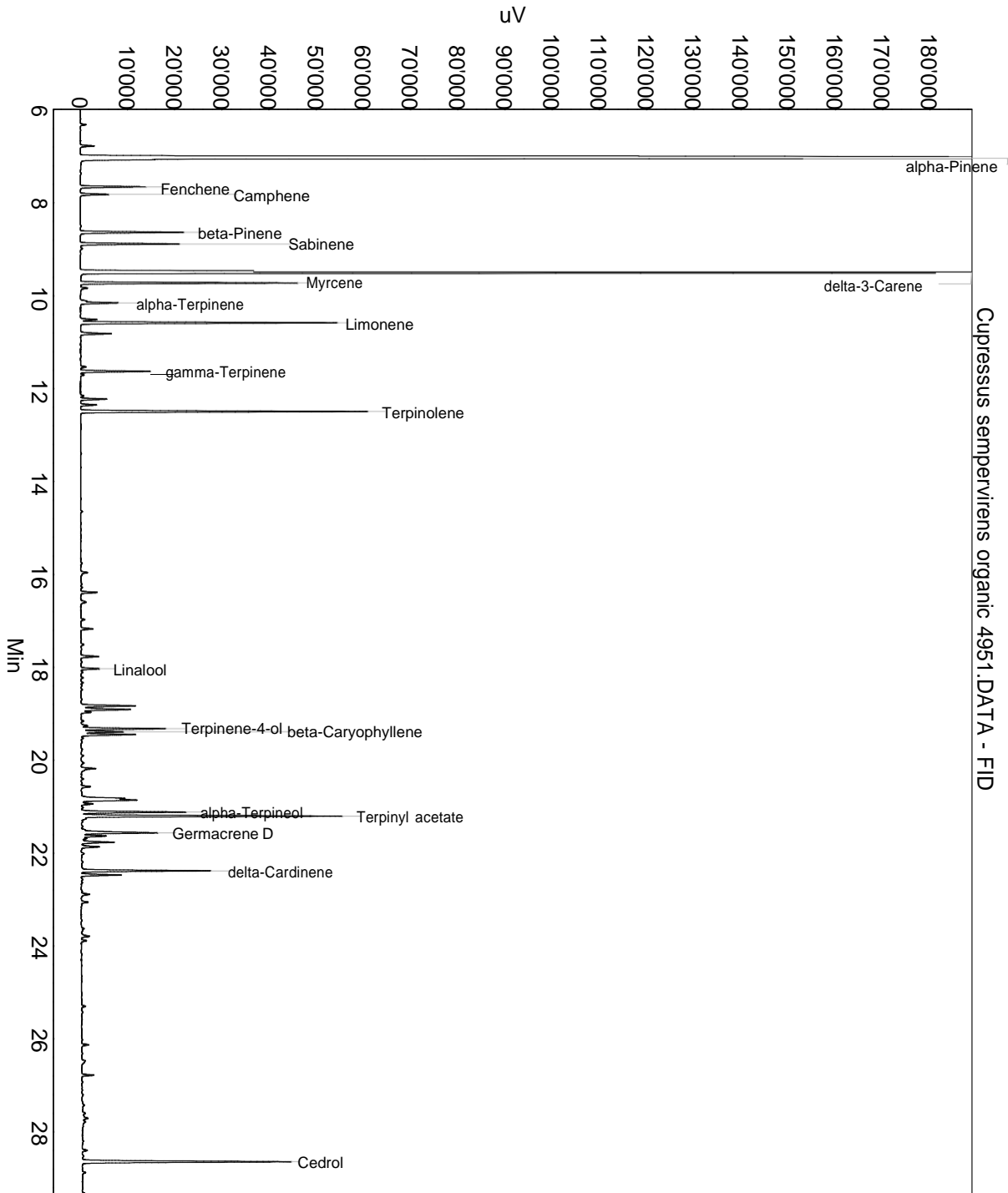
Lot: 4951

Date of analysis: 19.07.2019 10:52:10

System: GC-430 FID

Column: BGB Wax 60m / 0.25mm / 0.25um

Method: 180306 essential basis 60min



This data sheet was issued to the best of our knowledge and is supplied without warranty for its correctness or accuracy.

## Certificate of Analysis

Product: **Cupressus sempervirens organic 4951**

Lot: 4951

Date of analysis: 19.07.2019 10:52:10

System: GC-430 FID

Column: BGB Wax 60m / 0.25mm / 0.25um

Method: 180306 essential basis 60min

Index	Name	Time [Min]	Area [uV.Min]	Area % [%]	Allergene
1		6.32	33.4	0.052	
2		6.77	84.8	0.133	
3	alpha-Pinene	7.04	31020.3	48.784	
4	Fenchene	7.65	404.4	0.636	
5	Camphene	7.82	178.6	0.281	
6	beta-Pinene	8.63	662.7	1.042	
7	Sabinene	8.88	617.2	0.971	
8	delta-3-Carene	9.50	13334.9	20.971	
9	Myrcene	9.72	1298.5	2.042	
10		9.84	49.1	0.077	
11		10.11	33.5	0.053	
12	alpha-Terpinene	10.15	248.1	0.390	
13		10.51	107.1	0.168	
14	Limonene	10.58	1627.7	2.560	Directive 2003/15EC (7th)
15		10.82	211.3	0.332	
16		11.53	35.8	0.056	
17	gamma-Terpinene	11.63	446.1	0.702	
18		11.71	22.1	0.035	
19		12.15	21.6	0.034	
20		12.22	172.7	0.272	
21		12.35	105.0	0.165	
22	Terpinolene	12.49	1854.4	2.916	
23		15.96	58.5	0.092	
24		16.39	111.3	0.175	
25		16.60	53.7	0.084	
26		16.97	27.4	0.043	
27		17.17	84.6	0.133	
28		17.77	127.8	0.201	
29	Linalool	18.03	118.0	0.186	Directive 2003/15EC (7th)
30		18.83	384.6	0.605	
31		18.91	379.7	0.597	
32		18.96	65.3	0.103	
33		19.16	17.9	0.028	
34		19.26	50.4	0.079	
35	Terpinene-4-ol	19.32	565.7	0.890	
36	beta-Caryophyllene	19.39	292.0	0.459	
37		19.45	389.4	0.612	
38		20.18	123.7	0.195	

This data sheet was issued to the best of our knowledge and is supplied without warranty for its correctness or accuracy.

## Certificate of Analysis

Product: **Cupressus sempervirens organic 4951**

Lot: 4951

Date of analysis: 19.07.2019 10:52:10

System: GC-430 FID

Column: BGB Wax 60m / 0.25mm / 0.25um

Method: 180306 essential basis 60min

Index	Name	Time [Min]	Area [uV.Min]	Area % [%]	Allergene
39		20.57	65.0	0.102	
40		20.82	269.3	0.423	
41		20.86	457.8	0.720	
42		20.94	82.2	0.129	
43	alpha-Terpineol	21.12	721.1	1.134	
44	Terpinyl acetate	21.20	1757.0	2.763	
45	Germacrene D	21.56	656.7	1.033	
46		21.63	180.4	0.284	
47		21.68	38.3	0.060	
48		21.77	248.1	0.390	
49		21.86	136.0	0.214	
50		22.01	27.0	0.042	
51	delta-Cardinene	22.38	865.7	1.361	
52		22.47	266.7	0.419	
53		22.89	61.6	0.097	
54		23.06	54.3	0.085	
55		23.63	21.4	0.034	
56		23.79	73.1	0.115	
57		23.89	35.4	0.056	
58		25.30	29.3	0.046	
59		26.13	50.0	0.079	
60		26.47	43.1	0.068	
61		26.78	77.7	0.122	
62		27.71	43.3	0.068	
63		27.79	22.3	0.035	
64		28.40	38.7	0.061	
65	Cedrol	28.64	1563.6	2.459	
66		28.88	24.4	0.038	
67		29.47	125.5	0.197	
68		29.69	30.2	0.048	
69		30.55	43.5	0.068	
70		33.62	58.7	0.092	
Total			63586.9	100.000	

This data sheet was issued to the best of our knowledge and is supplied without warranty for its correctness or accuracy.