

Certificate of Analysis

Product: **Cymbopogon martini 1382**

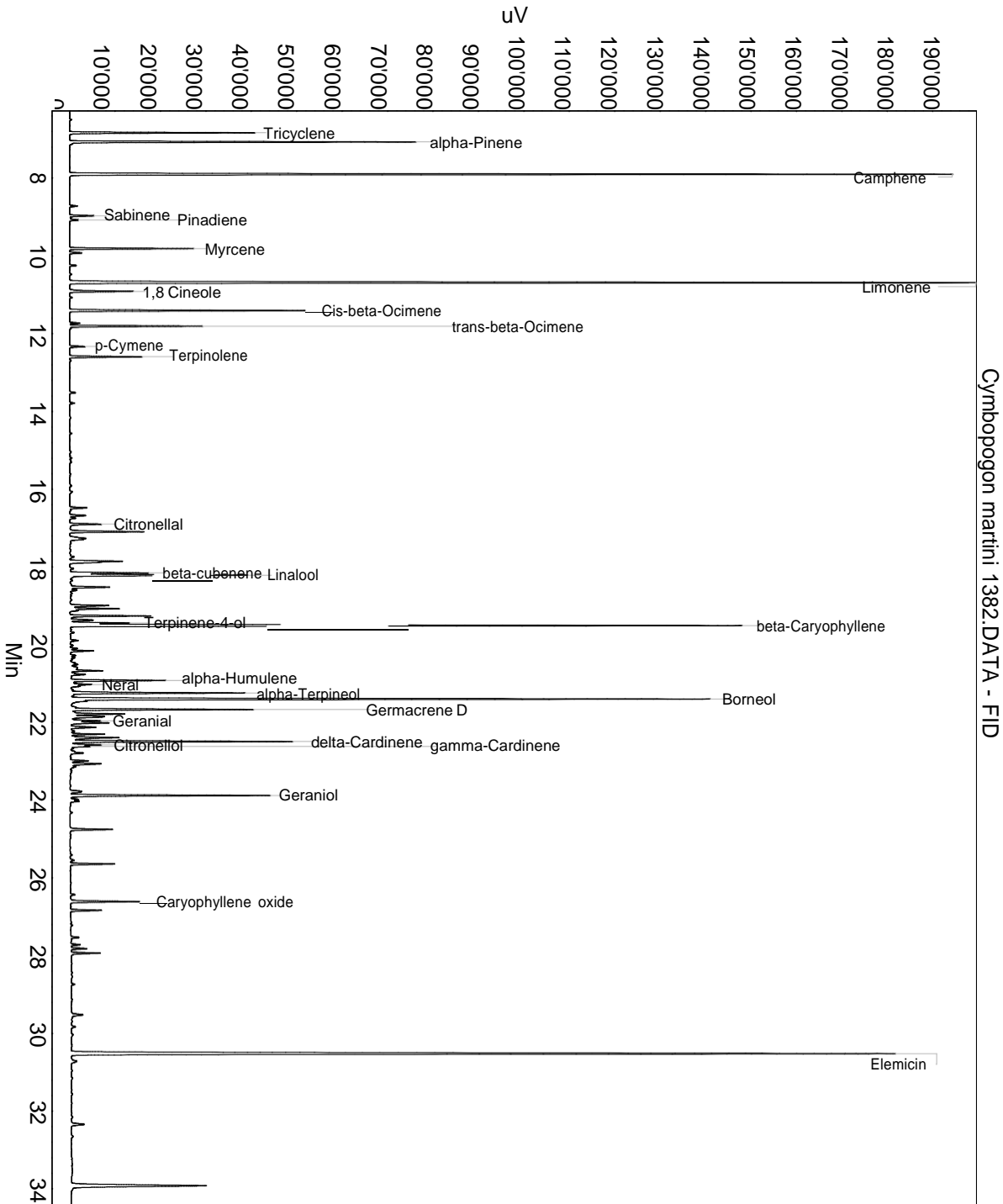
Lot: 1382

Date of analysis: 19.11.2014 19:47:49

System: GC-430 FID

Column: BGB Wax 60m / 0.25mm / 0.25um

Method: 151002 Cymbopogon martini gingergrass



This data sheet was issued to the best of our knowledge and is supplied without warranty for its correctness or accuracy.

Certificate of Analysis

Product: **Cymbopogon martini 1382**

Lot: 1382

Date of analysis: 19.11.2014 19:47:49

System: GC-430 FID

Column: BGB Wax 60m / 0.25mm / 0.25um

Method: 151002 Cymbopogon martini gingergrass

Index	Name	Time [Min]	Area [uV.Min]	Area % [%]	Allergene
1	Tricyclene	6.83	1145.6	2.030	
2	alpha-Pinene	7.07	2120.9	3.758	
3	Camphene	7.90	5793.0	10.264	
4	Sabinene	8.97	155.9	0.276	
5	Pinadiene	9.08	54.0	0.096	
6	Myrcene	9.81	780.1	1.382	
7	Limonene	10.69	7013.9	12.427	Directive 2003/15EC (7th)
8	1,8 Cineole	10.91	449.7	0.797	
9	Cis-beta-Ocimene	11.41	1500.3	2.658	
10	trans-beta-Ocimene	11.81	853.0	1.511	
11	p-Cymene	12.33	108.0	0.191	
12	Terpinolene	12.60	488.1	0.865	
13		16.48	136.7	0.242	
14		16.68	168.4	0.298	
15	Citronellal	16.90	237.2	0.420	
16		17.09	555.8	0.985	
17		17.85	384.7	0.682	
18		17.88	151.4	0.268	
19	beta-cubenene	18.16	510.1	0.904	
20	Linalool	18.21	1371.5	2.430	Directive 2003/15EC (7th)
21		18.52	328.0	0.581	
22		19.00	312.1	0.553	
23		19.08	365.9	0.648	
24		19.12	57.1	0.101	
25		19.26	557.5	0.988	
26		19.37	196.5	0.348	
27	Terpinene-4-ol	19.44	398.8	0.707	
28	beta-Caryophyllene	19.51	5098.5	9.033	
29		20.16	152.5	0.270	
30		20.67	181.0	0.321	
31	alpha-Humulene	20.92	696.1	1.233	
32	Neral	21.03	180.3	0.320	(= Citral) Directive 2003/15EC (7th)
33		21.07	66.1	0.117	
34	alpha-Terpineol	21.25	1214.4	2.152	
35	Borneol	21.40	4762.1	8.437	
36	Germacrene D	21.67	1342.1	2.378	
37		21.78	397.8	0.705	
38		21.85	354.7	0.628	

This data sheet was issued to the best of our knowledge and is supplied
without warranty for its correctness or accuracy.

Certificate of Analysis

Product: **Cymbopogon martini 1382**

Lot: 1382

Date of analysis: 19.11.2014 19:47:49

System: GC-430 FID

Column: BGB Wax 60m / 0.25mm / 0.25um

Method: 151002 Cymbopogon martini gingergrass

Index	Name	Time [Min]	Area [uV.Min]	Area % [%]	Allergene
39	Geranial	21.96	212.3	0.376	(= Citral) Directive 2003/15EC (7th)
40		22.01	301.1	0.534	
41		22.13	206.6	0.366	
42		22.31	207.2	0.367	
43		22.39	374.4	0.663	
44	delta-Cardinene	22.49	1538.6	2.726	
45	Citronellol	22.58	184.0	0.326	
46	gamma-Cardinene	22.62	88.5	0.157	
47		23.07	264.7	0.469	
48	Geraniol	23.88	1381.7	2.448	Directive 2003/15EC (7th)
49		24.03	114.9	0.204	
50		24.76	316.6	0.561	
51		25.64	307.0	0.544	
52	Caryophyllene oxide	26.61	513.6	0.910	
53		26.84	214.9	0.381	
54		27.53	63.1	0.112	
55		27.94	204.2	0.362	
56		29.52	130.1	0.230	
57	Elemicin	30.52	7447.5	13.195	
58		32.34	137.6	0.244	
59		33.92	1593.3	2.823	
Total			56441.5	100.000	

This data sheet was issued to the best of our knowledge and is supplied without warranty for its correctness or accuracy.