

Certificate of Analysis

Product: Eucalyptus globulus organic 2354

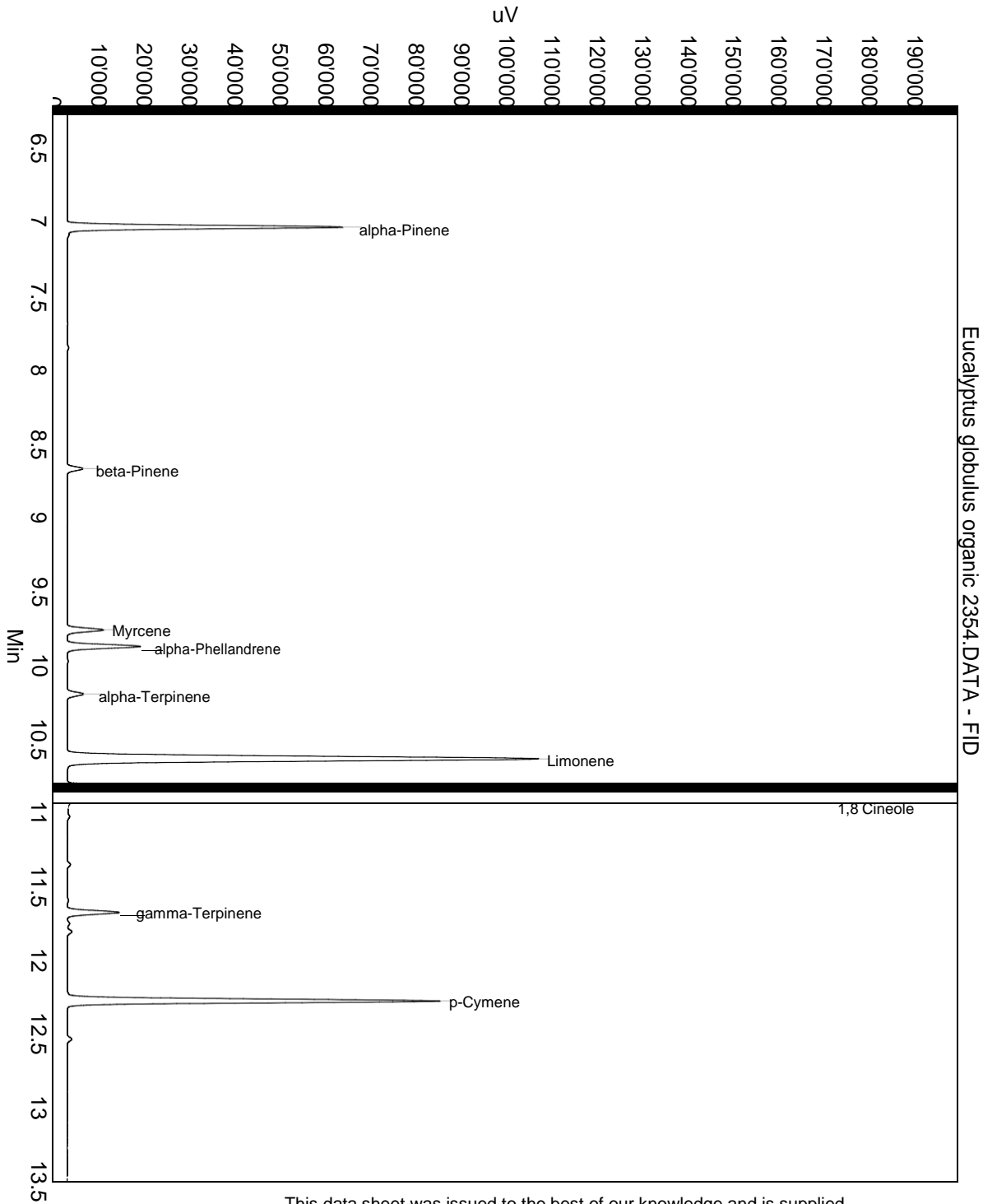
Lot: 2354

Date of analysis: 24.04.2018 20:28:43

System: GC-430 FID

Column: BGB Wax 60m / 0.25mm / 0.25um

Method: 120102 essential basis 60



This data sheet was issued to the best of our knowledge and is supplied without warranty for its correctness or accuracy.

Certificate of Analysis

Product: Eucalyptus globulus organic 2354

Lot: 2354

Date of analysis: 24.04.2018 20:28:43

System: GC-430 FID

Column: BGB Wax 60m / 0.25mm / 0.25um

Method: 120102 essential basis 60

Index	Name	Time [Min]	Area [uV.Min]	Area % [%]	Allergene
1	alpha-Pinene	7.04	1728.5	3.287	
2	beta-Pinene	8.68	109.3	0.208	
3	Myrcene	9.77	240.3	0.457	
4	alpha-Phellandrene	9.88	504.1	0.959	
5	alpha-Terpinene	10.20	117.5	0.223	
6	Limonene	10.64	4001.9	7.609	Directive 2003/15EC (7th)
7	1,8 Cineole	10.91	42719.3	81.228	
8	gamma-Terpinene	11.68	347.7	0.661	
9	p-Cymene	12.28	2541.1	4.832	
10	alpha-Terpineol	21.16	281.8	0.536	
Total			52591.5	100.000	

This data sheet was issued to the best of our knowledge and is supplied without warranty for its correctness or accuracy.