

Certificate of Analysis

Product: **Gaultheria procumbens organic 6626**

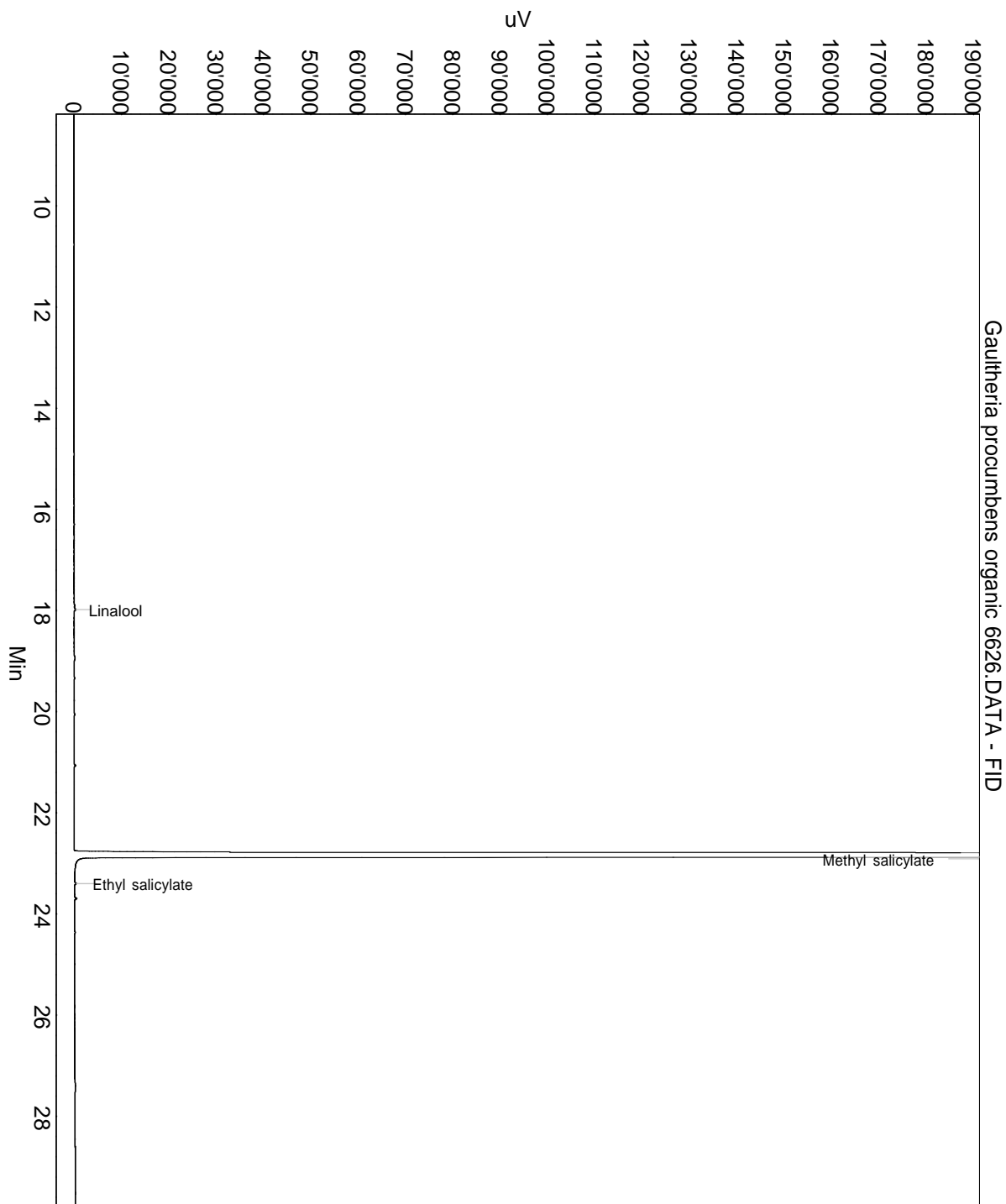
Lot: 6626

Date of analysis: 17.04.2020 20:32:11

System: GC-430 FID

Column: BGB Wax 60m / 0.25mm / 0.25um

Method: 180306 essential basis 60min



This data sheet was issued to the best of our knowledge and is supplied without warranty for its correctness or accuracy.

Certificate of Analysis

Product: **Gaultheria procumbens organic 6626**

Lot: 6626

Date of analysis: 17.04.2020 20:32:11

System: GC-430 FID

Column: BGB Wax 60m / 0.25mm / 0.25um

Method: 180306 essential basis 60min

Index	Name	Time [Min]	Area [uV.Min]	Area % [%]	Allergene
1	Linalool	17.98	7.0	0.011	Directive 2003/15EC (7th)
2		18.93	14.4	0.022	
3		21.06	10.8	0.017	
4	Methyl salicylate	22.86	63929.9	99.893	
5	Ethyl salicylate	23.40	12.2	0.019	
6		23.70	17.2	0.027	
7		24.37	6.7	0.010	
Total			63998.1	100.000	

This data sheet was issued to the best of our knowledge and is supplied without warranty for its correctness or accuracy.