

Certificate of Analysis

Product: **Hyssopus officinalis 1915**

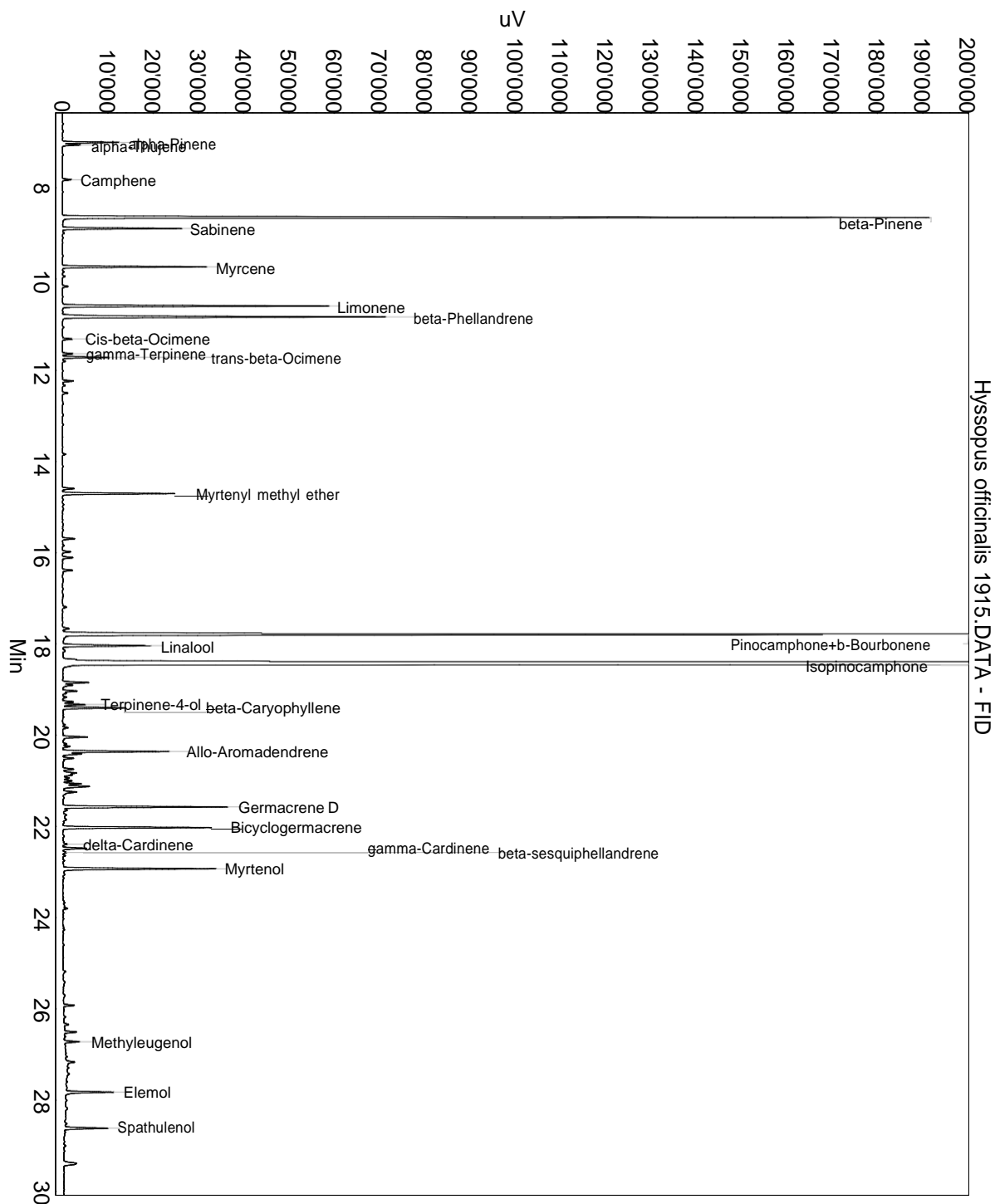
Lot: 1915

Date of analysis: 02.10.2018 22:35:06

System: GC-430 FID

Column: BGB Wax 60m / 0.25mm / 0.25um

Method: 180306 essential basis 60min



This data sheet was issued to the best of our knowledge and is supplied without warranty for its correctness or accuracy.

Certificate of Analysis

Product: **Hyssopus officinalis 1915**

Lot: 1915

Date of analysis: 02.10.2018 22:35:06

System: GC-430 FID

Column: BGB Wax 60m / 0.25mm / 0.25um

Method: 180306 essential basis 60min

Index	Name	Time [Min]	Area [uV.Min]	Area % [%]	Allergene
1	alpha-Pinene	7.01	352.3	0.575	
2	alpha-Thujene	7.06	112.0	0.183	
3	Camphene	7.82	61.3	0.100	
4	beta-Pinene	8.65	5902.9	9.637	
5	Sabinene	8.89	769.5	1.256	
6	Myrcene	9.73	899.5	1.469	
7		10.16	38.2	0.062	
8	Limonene	10.59	1777.8	2.903	Directive 2003/15EC (7th)
9	beta-Phellandrene	10.83	2292.8	3.743	
10	Cis-beta-Ocimene	11.32	66.4	0.108	
11	gamma-Terpinene	11.64	73.1	0.119	
12	trans-beta-Ocimene	11.72	302.8	0.494	
13		11.80	20.6	0.034	
14		12.24	73.9	0.121	
15		12.50	37.5	0.061	
16		13.84	23.5	0.038	
17		14.59	84.6	0.138	
18	Myrtenyl methyl ether	14.70	771.5	1.260	
19		15.70	88.0	0.144	
20		15.98	56.4	0.092	
21		16.11	75.9	0.124	
22		16.39	74.4	0.121	
23		17.19	28.9	0.047	
24		17.67	53.7	0.088	
25	Pinocamphone+b-Bourbonene	17.79	8071.8	13.178	
26	Linalool	18.04	673.2	1.099	Directive 2003/15EC (7th)
27		18.34	65.9	0.108	
28	Isopinocamphone	18.44	30254.8	49.396	
29		18.85	191.6	0.313	
30		18.90	82.3	0.134	
31		19.03	94.1	0.154	
32		19.17	19.3	0.032	
33		19.27	76.1	0.124	
34	Terpinene-4-ol	19.33	159.8	0.261	
35	beta-Caryophyllene	19.40	440.8	0.720	
36		19.84	35.7	0.058	
37		20.04	191.4	0.313	
38		20.19	28.4	0.046	

This data sheet was issued to the best of our knowledge and is supplied
without warranty for its correctness or accuracy.

Certificate of Analysis

Product: **Hyssopus officinalis 1915**

Lot: 1915

Date of analysis: 02.10.2018 22:35:06

System: GC-430 FID

Column: BGB Wax 60m / 0.25mm / 0.25um

Method: 180306 essential basis 60min

Index	Name	Time [Min]	Area [uV.Min]	Area % [%]	Allergene
39		20.24	52.2	0.085	
40	Allo-Aromadendrene	20.36	673.8	1.100	
41		20.41	70.3	0.115	
42		20.51	72.4	0.118	
43		20.74	83.5	0.136	
44		20.83	117.8	0.192	
45		20.87	74.9	0.122	
46		20.94	54.4	0.089	
47		21.00	65.0	0.106	
48		21.07	131.7	0.215	
49		21.12	199.8	0.326	
50		21.14	45.4	0.074	
51		21.25	123.4	0.201	
52	Germacrene D	21.57	1173.6	1.916	
53		21.65	35.5	0.058	
54		21.75	21.6	0.035	
55	Bicyclogermacrene	22.03	1040.8	1.699	
56	delta-Cardinene	22.39	34.3	0.056	
57	gamma-Cardinene	22.48	172.9	0.282	
58	beta-sesquiphellandrene	22.57	30.7	0.050	
59		22.64	17.1	0.028	
60	Myrtenol	22.93	1109.8	1.812	
61		23.80	26.8	0.044	
62		25.92	79.6	0.130	
63		26.34	36.5	0.060	
64		26.51	88.9	0.145	
65	Methyleugenol	26.72	105.7	0.173	
66		27.17	80.8	0.132	
67	Elemol	27.83	345.6	0.564	
68	Spathulenol	28.62	316.3	0.516	
69		29.39	179.1	0.292	
70		30.41	98.9	0.161	
71		30.59	68.3	0.111	
Total			61250.2	100.000	

This data sheet was issued to the best of our knowledge and is supplied
without warranty for its correctness or accuracy.