

Certificate of Analysis

Product: **Inula graveolens organic 6042**

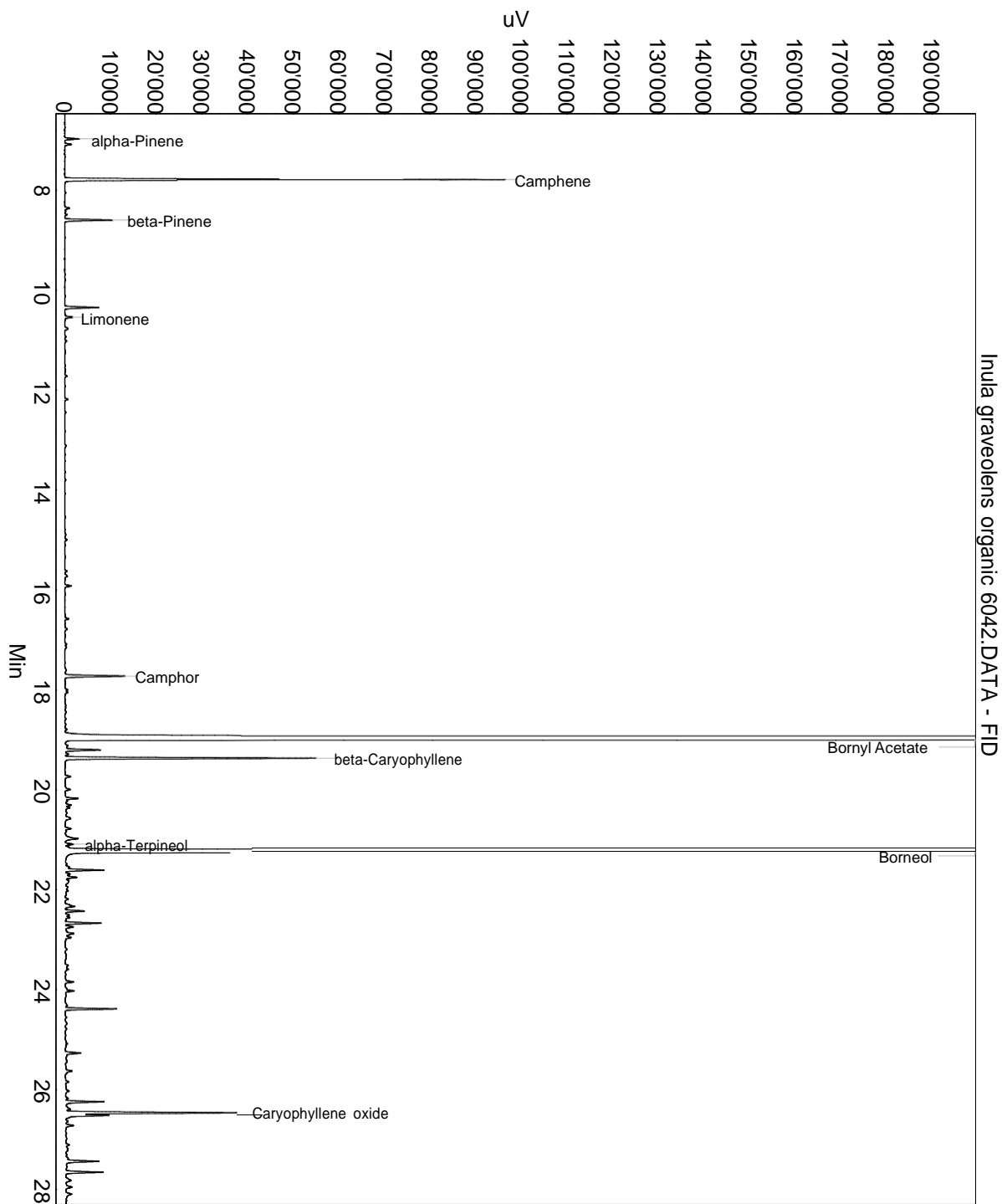
Lot: 6042

Date of analysis: 06.01.2020 17:18:25

System: GC-430 FID

Column: BGB Wax 60m / 0.25mm / 0.25um

Method: 180306 essential basis 60min



This data sheet was issued to the best of our knowledge and is supplied without warranty for its correctness or accuracy.

Certificate of Analysis

Product: **Inula graveolens organic 6042**

Lot: 6042

Date of analysis: 06.01.2020 17:18:25

System: GC-430 FID

Column: BGB Wax 60m / 0.25mm / 0.25um

Method: 180306 essential basis 60min

Index	Name	Time [Min]	Area [uV.Min]	Area % [%]	Allergene
1	alpha-Pinene	6.97	91.4	0.130	
2		7.08	46.5	0.066	
3	Camphene	7.79	2810.0	3.996	
4		8.36	43.1	0.061	
5	beta-Pinene	8.60	315.1	0.448	
6		10.35	228.5	0.325	
7	Limonene	10.54	63.7	0.091	Directive 2003/15EC (7th)
8		15.92	47.5	0.068	
9	Camphor	17.72	440.9	0.627	
10	Bornyl Acetate	18.99	36493.1	51.891	
11		19.20	286.9	0.408	
12		19.28	26.8	0.038	
13	beta-Caryophyllene	19.37	1679.8	2.389	
14		19.73	45.4	0.065	
15		19.99	43.7	0.062	
16		20.17	88.0	0.125	
17		20.23	14.7	0.021	
18		20.30	43.2	0.061	
19		20.36	32.2	0.046	
20		20.58	59.4	0.084	
21		20.78	45.6	0.065	
22		20.98	138.6	0.197	
23	alpha-Terpineol	21.09	57.6	0.082	
24	Borneol	21.24	20658.3	29.375	
25		21.61	244.6	0.348	
26		21.69	29.0	0.041	
27		21.75	90.0	0.128	
28		21.82	48.6	0.069	
29		22.33	100.5	0.143	
30		22.43	134.1	0.191	
31		22.51	33.9	0.048	
32		22.56	39.6	0.056	
33		22.67	250.8	0.357	
34		22.75	70.5	0.100	
35		22.88	97.5	0.139	
36		22.96	53.1	0.075	
37		23.84	59.1	0.084	
38		24.03	67.2	0.096	

This data sheet was issued to the best of our knowledge and is supplied without warranty for its correctness or accuracy.

Certificate of Analysis

Product: **Inula graveolens organic 6042**

Lot: 6042

Date of analysis: 06.01.2020 17:18:25

System: GC-430 FID

Column: BGB Wax 60m / 0.25mm / 0.25um

Method: 180306 essential basis 60min

Index	Name	Time [Min]	Area [uV.Min]	Area % [%]	Allergene
39		24.38	324.0	0.461	
40		25.27	122.6	0.174	
41		25.63	54.9	0.078	
42		26.24	262.6	0.373	
43	Caryophyllene oxide	26.46	1215.0	1.728	
44		26.52	311.0	0.442	
45		26.72	80.6	0.115	
46		27.43	231.4	0.329	
47		27.65	261.3	0.372	
48		27.95	52.3	0.074	
49		28.09	58.9	0.084	
50		28.37	68.5	0.097	
51		28.65	80.9	0.115	
52		28.83	72.3	0.103	
53		28.89	95.1	0.135	
54		28.99	44.3	0.063	
55		29.26	76.6	0.109	
56		29.36	345.0	0.491	
57		29.42	50.8	0.072	
58		29.48	14.4	0.021	
59		29.79	51.5	0.073	
60		30.00	110.1	0.157	
61		30.98	156.0	0.222	
62		31.80	163.3	0.232	
63		31.90	626.9	0.891	
64		32.73	153.8	0.219	
65		33.71	123.3	0.175	
Total			70326.0	100.000	

This data sheet was issued to the best of our knowledge and is supplied without warranty for its correctness or accuracy.