

# Certificate of Analysis

Product: **Juniperus communis 2564**

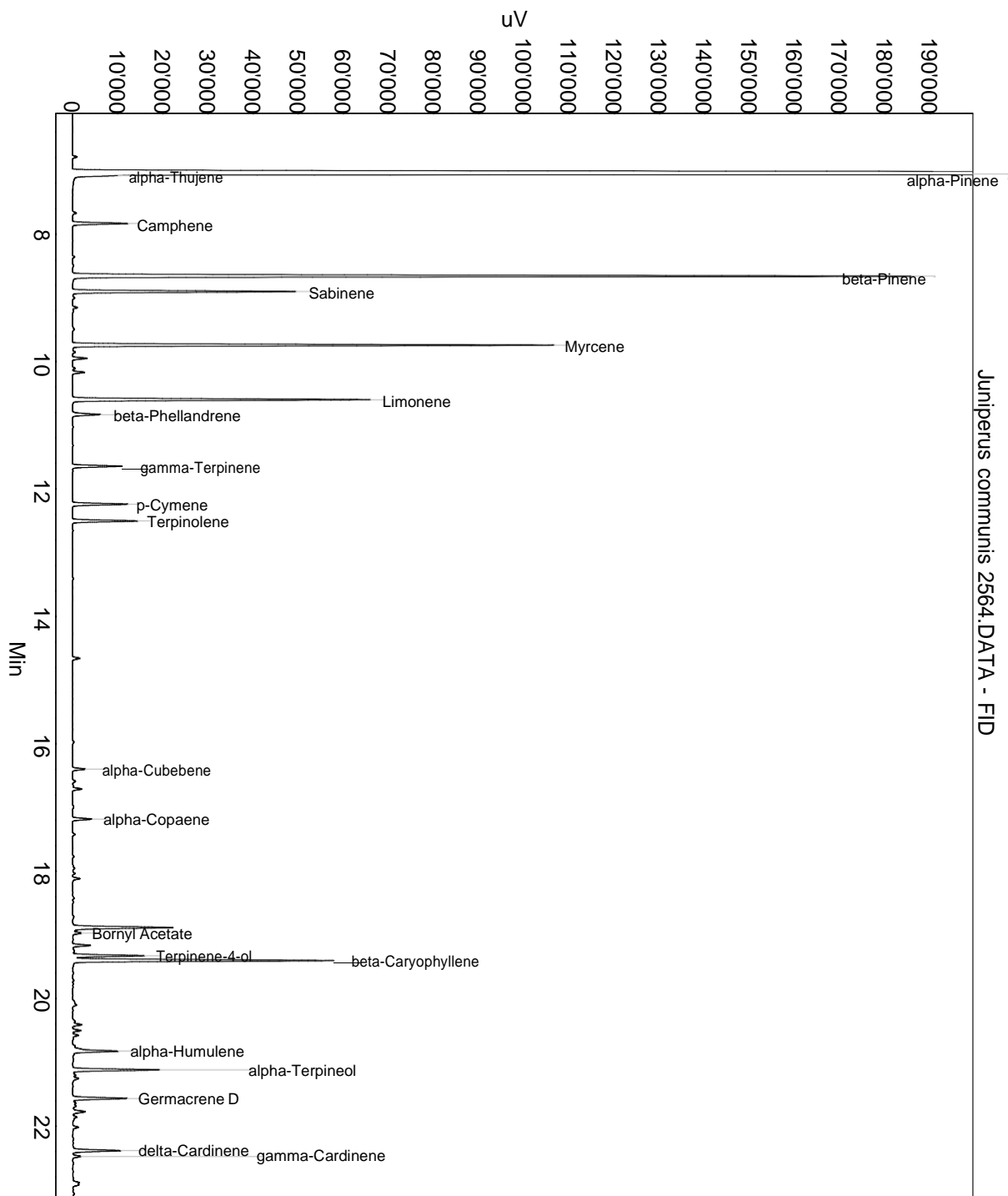
Lot: 2564

Date of analysis: 27.11.2018 17:30:47

System: GC-430 FID

Column: BGB Wax 60m / 0.25mm / 0.25um

Method: 180306 essential basis 60min



This data sheet was issued to the best of our knowledge and is supplied without warranty for its correctness or accuracy.

## Certificate of Analysis

Product: **Juniperus communis 2564**

Lot: 2564

Date of analysis: 27.11.2018 17:30:47

System: GC-430 FID

Column: BGB Wax 60m / 0.25mm / 0.25um

Method: 180306 essential basis 60min

Index	Name	Time [Min]	Area [uV.Min]	Area % [%]	Allergene
1		6.79	31.4	0.057	
2	alpha-Pinene	7.05	34057.0	61.760	
3	alpha-Thujene	7.08	157.0	0.285	
4		7.67	30.6	0.056	
5	Camphene	7.83	363.0	0.658	
6	beta-Pinene	8.66	5710.1	10.355	
7	Sabinene	8.90	1443.6	2.618	
8		9.00	17.8	0.032	
9		9.15	34.4	0.062	
10	Myrcene	9.74	3052.4	5.535	
11		9.95	95.4	0.173	
12		10.17	77.5	0.140	
13	Limonene	10.60	1989.4	3.608	Directive 2003/15EC (7th)
14	beta-Phellandrene	10.83	206.7	0.375	
15	gamma-Terpinene	11.64	333.6	0.605	
16	p-Cymene	12.24	376.1	0.682	
17	Terpinolene	12.50	443.6	0.804	
18		14.66	54.2	0.098	
19	alpha-Cubebene	16.40	91.3	0.166	
20		16.71	66.3	0.120	
21	alpha-Copaene	17.18	137.6	0.250	
22		18.12	55.4	0.100	
23		18.89	769.3	1.395	
24	Bornyl Acetate	18.97	66.0	0.120	
25		19.17	123.5	0.224	
26		19.25	19.8	0.036	
27	Terpinene-4-ol	19.33	495.9	0.899	
28	beta-Caryophyllene	19.40	1865.5	3.383	
29		20.41	54.3	0.099	
30		20.50	56.2	0.102	
31		20.58	48.2	0.087	
32		20.79	52.3	0.095	
33	alpha-Humulene	20.83	343.9	0.624	
34	alpha-Terpineol	21.12	604.3	1.096	
35		21.20	25.0	0.045	
36		21.25	51.2	0.093	
37	Germacrene D	21.57	396.4	0.719	
38		21.69	47.7	0.086	

This data sheet was issued to the best of our knowledge and is supplied without warranty for its correctness or accuracy.

## Certificate of Analysis

Product: **Juniperus communis 2564**

Lot: 2564

Date of analysis: 27.11.2018 17:30:47

System: GC-430 FID

Column: BGB Wax 60m / 0.25mm / 0.25um

Method: 180306 essential basis 60min

Index	Name	Time [Min]	Area [uV.Min]	Area % [%]	Allergene
39		21.78	102.0	0.185	
40		21.86	24.5	0.044	
41		22.02	41.8	0.076	
42	delta-Cardinene	22.39	352.3	0.639	
43	gamma-Cardinene	22.48	58.2	0.106	
44		22.89	41.3	0.075	
45		22.92	28.6	0.052	
46	Germacrene B	23.81	165.0	0.299	
47		23.89	38.0	0.069	
48		24.66	26.3	0.048	
49		25.54	42.3	0.077	
50		26.33	53.7	0.097	
51		26.51	217.8	0.395	
52		27.43	36.2	0.066	
53		27.71	24.5	0.044	
54		27.79	25.2	0.046	
55		28.61	22.4	0.041	
Total			55144.0	100.000	

This data sheet was issued to the best of our knowledge and is supplied without warranty for its correctness or accuracy.