

Certificate of Analysis

Product: **Laurus nobilis organic 2595**

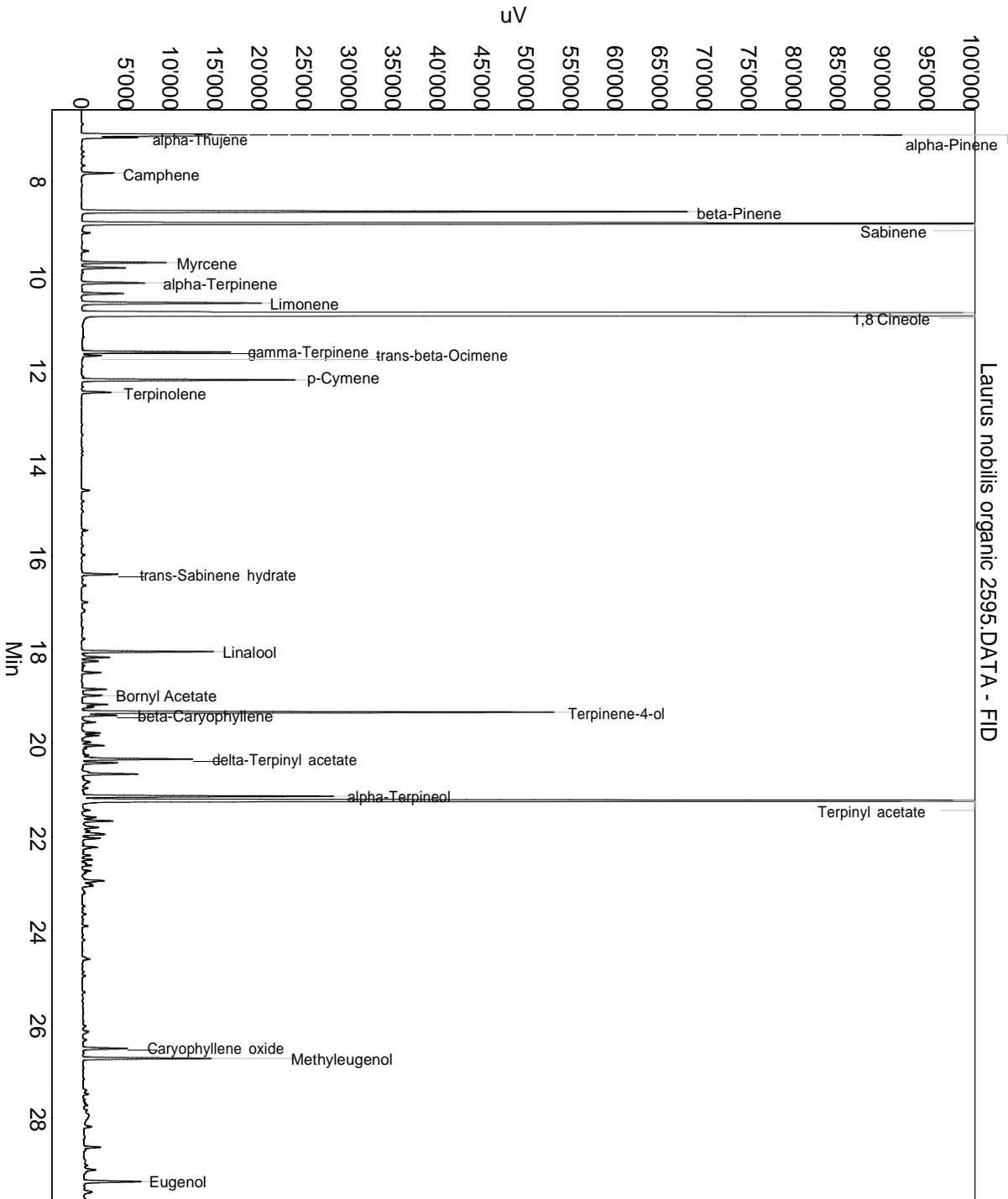
Lot: 2595

Date of analysis: 08.01.2019 17:20:08

System: GC-430 FID

Column: BGB Wax 60m / 0.25mm / 0.25um

Method: 180306 essential basis 60min



This data sheet was issued to the best of our knowledge and is supplied without warranty for its correctness or accuracy.

Certificate of Analysis

Product: **Laurus nobilis organic 2595**

Lot: 2595

Date of analysis: 08.01.2019 17:20:08

System: GC-430 FID

Column: BGB Wax 60m / 0.25mm / 0.25um

Method: 180306 essential basis 60min

Index	Name	Time [Min]	Area [uV.Min]	Area % [%]	Allergene
1	alpha-Pinene	7.02	2549.4	4.889	
2	alpha-Thujene	7.07	174.7	0.335	
3	Camphene	7.83	114.5	0.220	
4	beta-Pinene	8.65	2065.6	3.961	
5	Sabinene	8.91	4008.8	7.688	
6		9.11	28.8	0.055	
7		9.49	24.9	0.048	
8	Myrcene	9.74	276.7	0.531	
9		9.85	151.8	0.291	
10	alpha-Terpinene	10.17	219.5	0.421	
11		10.40	148.4	0.285	
12	Limonene	10.60	692.5	1.328	Directive 2003/15EC (7th)
13	1,8 Cineole	10.86	27334.5	52.419	
14	gamma-Terpinene	11.65	506.1	0.970	
15	trans-beta-Ocimene	11.73	70.4	0.135	
16	p-Cymene	12.25	723.9	1.388	
17	Terpinolene	12.51	103.8	0.199	
18		14.60	30.4	0.058	
19	trans-Sabinene hydrate	16.40	129.6	0.249	
20	Linalool	18.05	432.5	0.829	Directive 2003/15EC (7th)
21		18.17	105.4	0.202	
22		18.25	60.9	0.117	
23		18.49	69.2	0.133	
24		18.85	88.7	0.170	
25	Bornyl Acetate	18.98	53.4	0.102	
26		19.17	97.7	0.187	
27		19.23	45.9	0.088	
28	Terpinene-4-ol	19.34	1653.2	3.170	
29	beta-Caryophyllene	19.41	132.6	0.254	
30		19.55	65.1	0.125	
31		19.78	72.5	0.139	
32		19.84	71.8	0.138	
33		19.98	34.6	0.066	
34		20.05	83.2	0.160	
35		20.11	15.7	0.030	
36	delta-Terpinyl acetate	20.34	393.4	0.754	
37		20.42	125.2	0.240	
38		20.66	222.3	0.426	

This data sheet was issued to the best of our knowledge and is supplied
without warranty for its correctness or accuracy.

Certificate of Analysis

Product: **Laurus nobilis organic 2595**

Lot: 2595

Date of analysis: 08.01.2019 17:20:08

System: GC-430 FID

Column: BGB Wax 60m / 0.25mm / 0.25um

Method: 180306 essential basis 60min

Index	Name	Time [Min]	Area [uV.Min]	Area % [%]	Allergene
39	alpha-Terpineol	21.13	857.6	1.645	
40	Terpinyl acetate	21.23	5906.2	11.326	
41		21.43	30.6	0.059	
42		21.59	60.2	0.116	
43		21.66	124.8	0.239	
44		21.80	82.6	0.158	
45		21.87	34.8	0.067	
46		21.95	117.5	0.225	
47		22.03	67.8	0.130	
48		22.22	73.9	0.142	
49		22.40	30.7	0.059	
50		22.49	36.3	0.070	
51		22.61	47.7	0.092	
52		22.73	34.0	0.065	
53		22.78	15.7	0.030	
54		22.94	115.7	0.222	
55		23.05	76.1	0.146	
56		23.90	20.2	0.039	
57		26.16	36.5	0.070	
58	Caryophyllene oxide	26.52	168.3	0.323	
59	Methyleugenol	26.73	449.9	0.863	
60		28.19	34.6	0.066	
61		28.63	64.9	0.124	
62		28.68	10.5	0.020	
63		29.11	62.9	0.121	
64	Eugenol	29.36	245.8	0.471	Directive 2003/15EC (7th)
65		29.58	48.1	0.092	
66		30.60	75.1	0.144	
67		31.98	39.1	0.075	
Total			52145.8	100.000	

This data sheet was issued to the best of our knowledge and is supplied
without warranty for its correctness or accuracy.