

Certificate of Analysis

Product: **Leptospermum petersonii organic 7892**

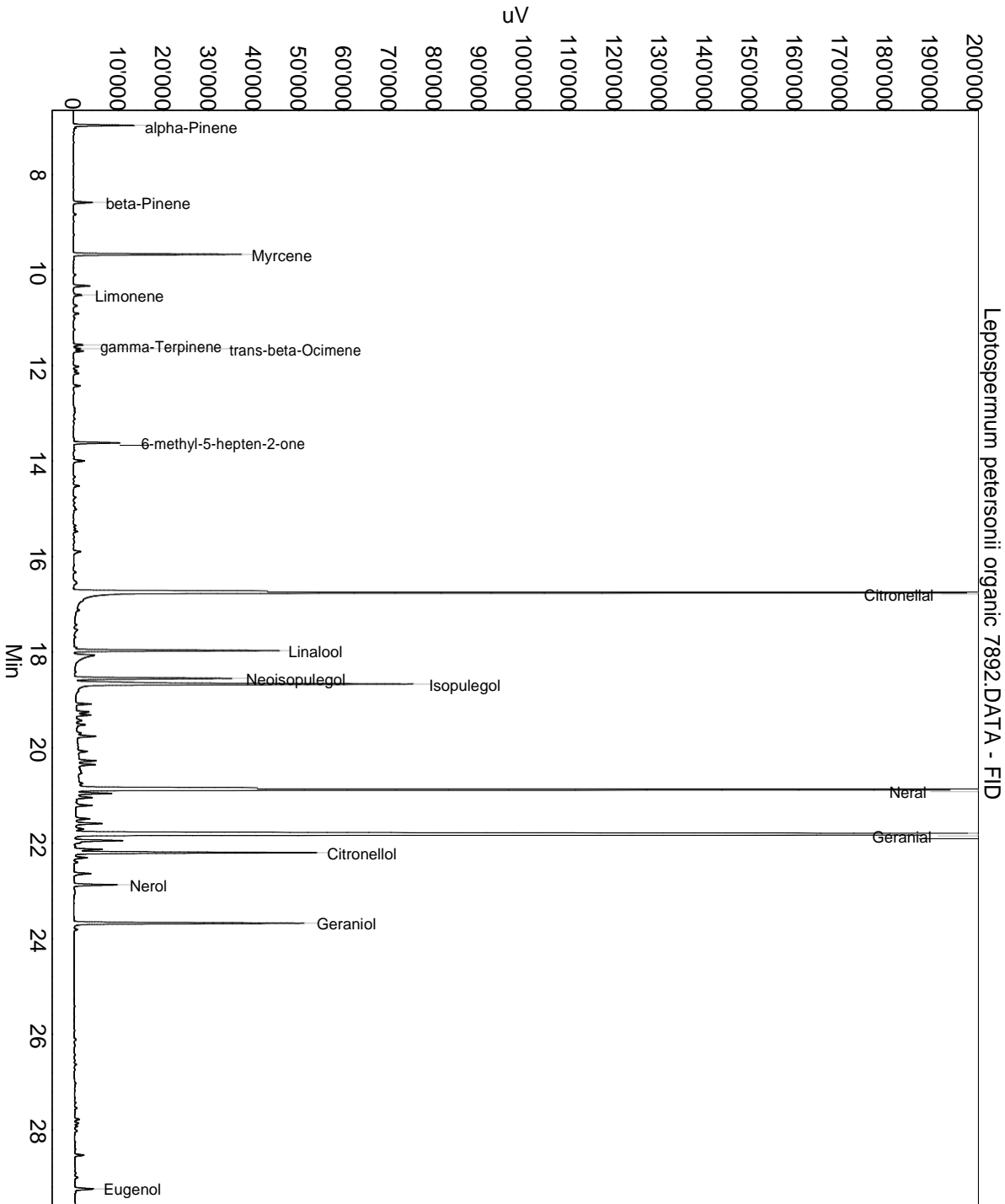
Lot: 7892

Date of analysis: 15.12.2020 17:21:48

System: GC-430 FID

Column: BGB Wax 60m / 0.25mm / 0.25um

Method: 180306 essential basis 60min



This data sheet was issued to the best of our knowledge and is supplied without warranty for its correctness or accuracy.

Certificate of Analysis

Product: **Leptospermum petersonii organic 7892**

Lot: 7892

Date of analysis: 15.12.2020 17:21:48

System: GC-430 FID

Column: BGB Wax 60m / 0.25mm / 0.25um

Method: 180306 essential basis 60min

Index	Name	Time [Min]	Area [uV.Min]	Area % [%]	Allergene
1	alpha-Pinene	6.97	392.7	0.730	
2	beta-Pinene	8.59	132.0	0.246	
3	Myrcene	9.67	1055.5	1.964	
4		10.33	114.1	0.212	
5	Limonene	10.53	63.8	0.119	Directive 2003/15EC (7th)
6		10.75	32.2	0.060	
7		10.91	37.1	0.069	
8	gamma-Terpinene	11.57	68.2	0.127	
9	trans-beta-Ocimene	11.65	50.3	0.094	
10		11.70	70.9	0.132	
11		12.02	62.4	0.116	
12		12.16	40.9	0.076	
13		12.43	46.5	0.086	
14	6-methyl-5-hepten-2-one	13.62	310.7	0.578	
15		14.00	93.0	0.173	
16		14.52	43.8	0.081	
17		15.48	25.1	0.047	
18		15.90	71.4	0.133	
19		16.33	19.5	0.036	
20	Citronellal	16.75	9909.3	18.433	
21		17.54	37.9	0.071	
22	Linalool	17.97	1324.4	2.464	Directive 2003/15EC (7th)
23		18.07	354.6	0.660	
24	Neoisopulegol	18.55	1107.7	2.061	
25	Isopulegol	18.67	2842.3	5.287	
26		19.09	105.6	0.196	
27		19.25	98.2	0.183	
28		19.32	117.0	0.218	
29		19.43	52.1	0.097	
30		19.52	71.9	0.134	
31		19.70	36.7	0.068	
32		19.76	152.3	0.283	
33		20.08	76.4	0.142	
34		20.28	136.7	0.254	
35		20.36	119.8	0.223	
36		20.75	37.0	0.069	
37	Neral	20.88	11553.9	21.493	(= Citral) Directive 2003/15EC (7th)
38		20.96	242.2	0.451	

This data sheet was issued to the best of our knowledge and is supplied without warranty for its correctness or accuracy.

Certificate of Analysis

Product: **Leptospermum petersonii organic 7892**

Lot: 7892

Date of analysis: 15.12.2020 17:21:48

System: GC-430 FID

Column: BGB Wax 60m / 0.25mm / 0.25um

Method: 180306 essential basis 60min

Index	Name	Time [Min]	Area [uV.Min]	Area % [%]	Allergene
39		21.05	131.2	0.244	
40		21.21	103.4	0.192	
41		21.49	112.7	0.210	
42		21.59	214.5	0.399	
43		21.71	77.0	0.143	
44	Geranial	21.82	16540.2	30.768	(= Citral) Directive 2003/15EC (7th)
45		21.95	394.7	0.734	
46		22.13	209.8	0.390	
47	Citronellol	22.20	1668.7	3.104	Directive 2003/15EC (7th)
48		22.30	104.8	0.195	
49		22.40	25.8	0.048	
50		22.64	136.3	0.254	
51	Nerol	22.87	309.0	0.575	
52	Geraniol	23.68	1577.3	2.934	Directive 2003/15EC (7th)
53		23.81	26.5	0.049	
54		27.78	39.5	0.073	
55		27.86	30.2	0.056	
56		27.93	21.3	0.040	
57		28.53	69.2	0.129	
58		29.00	25.1	0.047	
59	Eugenol	29.24	158.5	0.295	Directive 2003/15EC (7th)
60		30.51	113.2	0.211	
61		32.49	74.5	0.139	
62		32.79	164.9	0.307	
63		33.95	322.5	0.600	
Total			53757.1	100.000	

This data sheet was issued to the best of our knowledge and is supplied without warranty for its correctness or accuracy.