

Certificate of Analysis

Product: **Melaleuca alternifolia organic 4931**

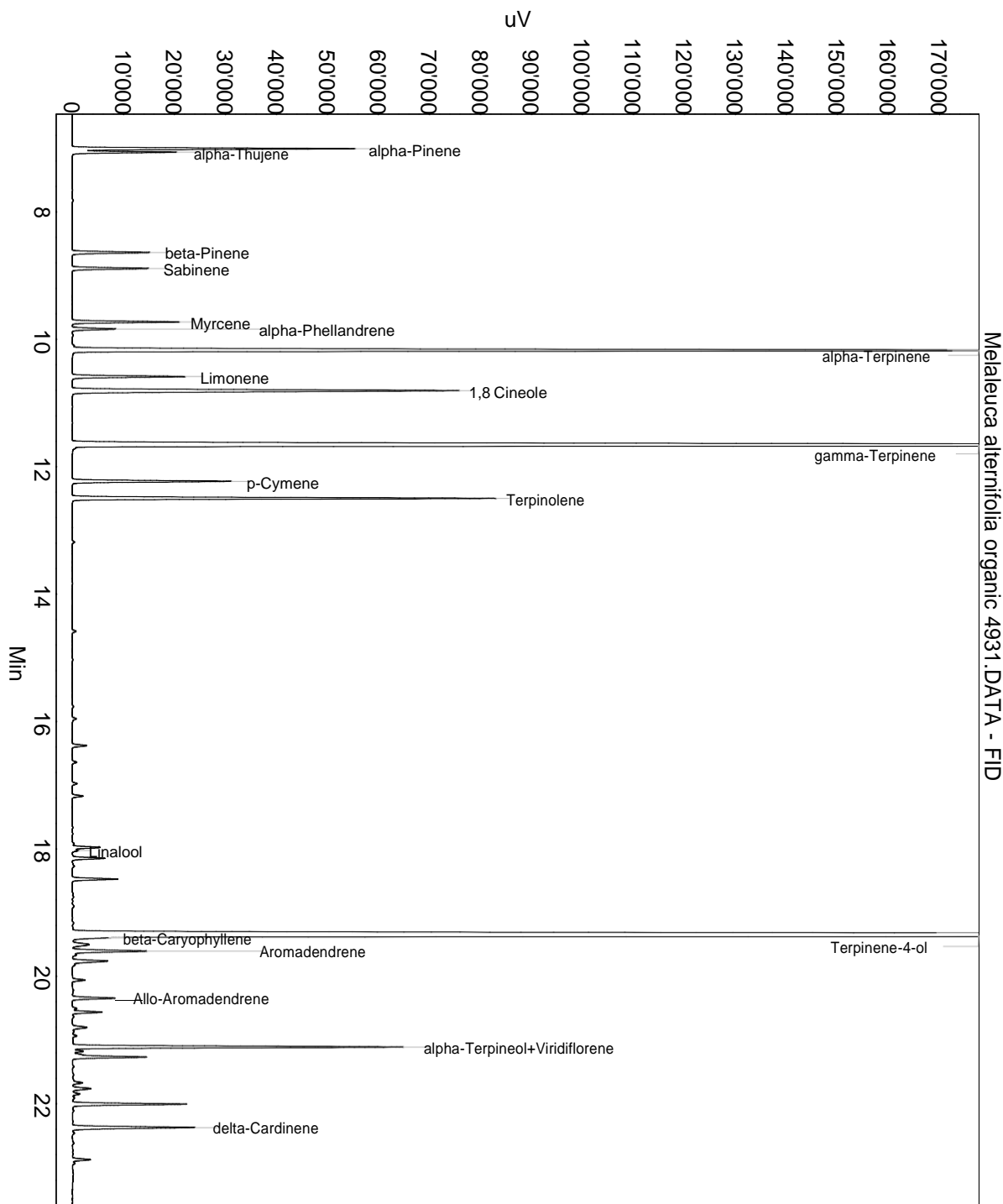
Lot: 4931

Date of analysis: 03.07.2019 17:16:33

System: GC-430 FID

Column: BGB Wax 60m / 0.25mm / 0.25um

Method: 180306 essential basis 60min



This data sheet was issued to the best of our knowledge and is supplied without warranty for its correctness or accuracy.

Certificate of Analysis

Product: **Melaleuca alternifolia organic 4931**

Lot: 4931

Date of analysis: 03.07.2019 17:16:33

System: GC-430 FID

Column: BGB Wax 60m / 0.25mm / 0.25um

Method: 180306 essential basis 60min

Index	Name	Time [Min]	Area [uV.Min]	Area % [%]	Allergene
1	alpha-Pinene	7.01	1534.6	2.148	
2	alpha-Thujene	7.06	553.9	0.775	
3	beta-Pinene	8.64	462.4	0.647	
4	Sabinene	8.89	442.9	0.620	
5	Myrcene	9.73	601.3	0.842	
6	alpha-Phellandrene	9.84	259.8	0.364	
7	alpha-Terpinene	10.18	7356.7	10.298	
8	Limonene	10.59	677.4	0.948	Directive 2003/15EC (7th)
9	1,8 Cineole	10.81	2824.9	3.954	
10	gamma-Terpinene	11.67	14913.7	20.876	
11	p-Cymene	12.23	944.6	1.322	
12	Terpinolene	12.50	2537.1	3.551	
13		14.58	25.3	0.035	
14		15.96	29.9	0.042	
15		16.38	92.7	0.130	
16		16.64	27.6	0.039	
17		16.98	31.0	0.043	
18		17.17	68.7	0.096	
19		17.98	182.8	0.256	
20	Linalool	18.03	35.2	0.049	Directive 2003/15EC (7th)
21		18.15	203.4	0.285	
22		18.27	19.3	0.027	
23		18.48	280.5	0.393	
24	Terpinene-4-ol	19.36	29939.4	41.909	
25	beta-Caryophyllene	19.39	110.1	0.154	
26		19.50	154.0	0.216	
27	Aromadendrene	19.61	547.0	0.766	
28		19.76	279.5	0.391	
29		20.06	79.1	0.111	
30	Allo-Aromadendrene	20.34	265.8	0.372	
31		20.51	28.8	0.040	
32		20.56	182.8	0.256	
33		20.80	104.8	0.147	
34	alpha-Terpineol+Viridiflorene	21.11	2017.9	2.825	
35		21.18	66.1	0.093	
36		21.27	513.6	0.719	
37		21.67	66.4	0.093	
38		21.76	125.2	0.175	

This data sheet was issued to the best of our knowledge and is supplied without warranty for its correctness or accuracy.

Certificate of Analysis

Product: **Melaleuca alternifolia organic 4931**

Lot: 4931

Date of analysis: 03.07.2019 17:16:33

System: GC-430 FID

Column: BGB Wax 60m / 0.25mm / 0.25um

Method: 180306 essential basis 60min

Index	Name	Time [Min]	Area [uV.Min]	Area % [%]	Allergene
39		21.85	40.9	0.057	
40		22.01	676.1	0.946	
41	delta-Cardinene	22.37	834.2	1.168	
42		22.88	112.3	0.157	
43		22.94	15.6	0.022	
44		23.79	56.9	0.080	
45		25.48	27.6	0.039	
46		26.61	26.7	0.037	
47	Methyleugenol	26.70	15.1	0.021	
48		26.80	59.4	0.083	
49		27.15	27.7	0.039	
50		27.49	98.4	0.138	
51		27.60	73.1	0.102	
52		27.70	160.9	0.225	
53		27.84	255.9	0.358	
54		27.99	125.7	0.176	
55		28.33	59.5	0.083	
56		28.47	110.0	0.154	
57		28.60	45.2	0.063	
58		29.87	31.4	0.044	
Total			71438.4	100.000	

This data sheet was issued to the best of our knowledge and is supplied without warranty for its correctness or accuracy.