

Certificate of Analysis

Product: **Melaleuca cajuputi organic 2490**

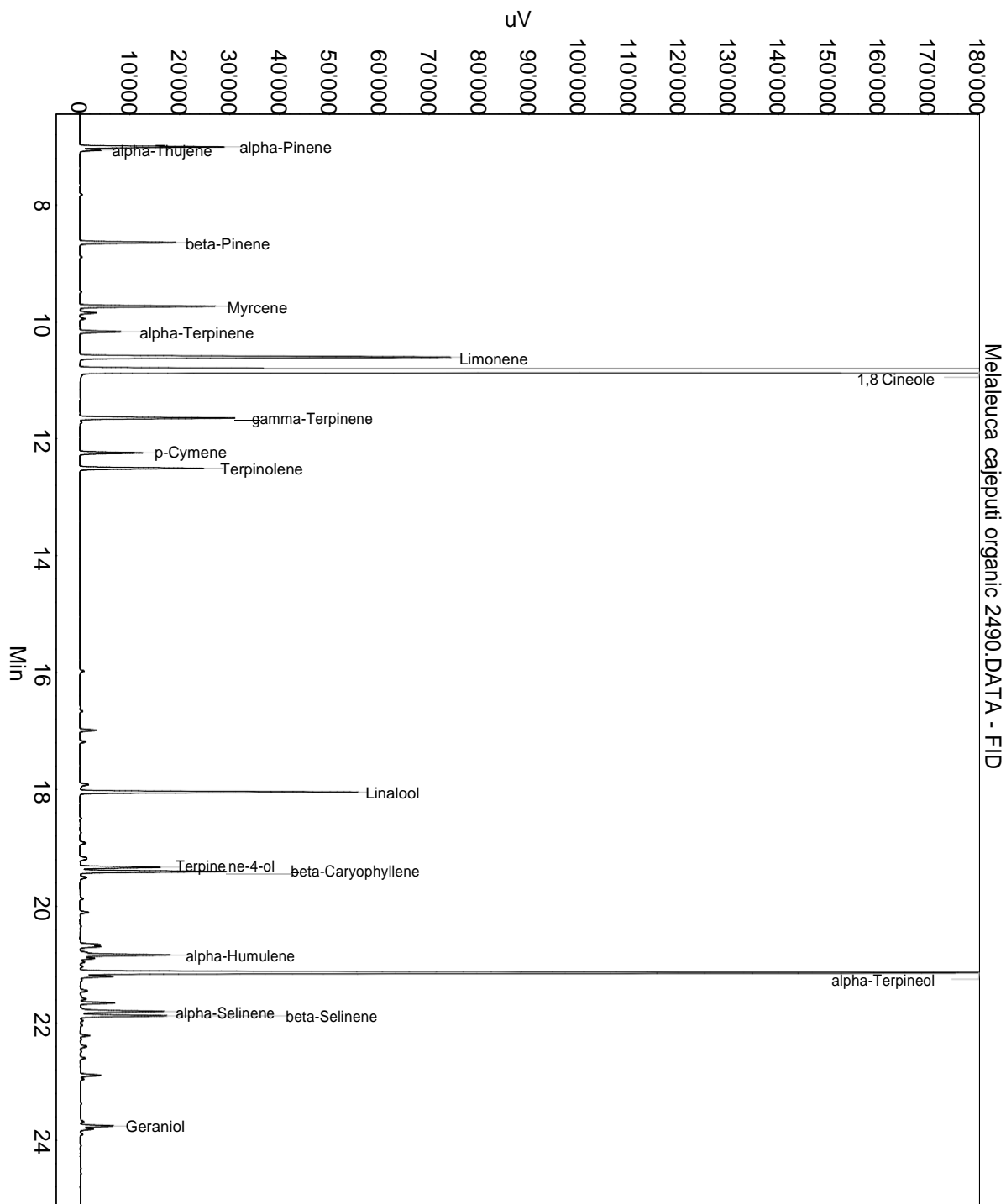
Lot: 2490

Date of analysis: 27.09.2018 16:48:16

System: GC-430 FID

Column: BGB Wax 60m / 0.25mm / 0.25um

Method: 120102 essential basis 60



This data sheet was issued to the best of our knowledge and is supplied without warranty for its correctness or accuracy.

Certificate of Analysis

Product: **Melaleuca cajeputi organic 2490**

Lot: 2490

Date of analysis: 27.09.2018 16:48:16

System: GC-430 FID

Column: BGB Wax 60m / 0.25mm / 0.25um

Method: 120102 essential basis 60

Index	Name	Time [Min]	Area [uV.Min]	Area % [%]	Allergene
1	alpha-Pinene	7.01	802.3	1.599	
2	alpha-Thujene	7.06	119.0	0.237	
3	beta-Pinene	8.64	585.0	1.166	
4	Myrcene	9.73	778.7	1.552	
5	alpha-Terpinene	10.17	253.8	0.506	
6	Limonene	10.60	2545.8	5.074	Directive 2003/15EC (7th)
7	1,8 Cineole	10.86	28635.5	57.071	
8	gamma-Terpinene	11.65	930.5	1.854	
9	p-Cymene	12.24	385.1	0.768	
10	Terpinolene	12.51	758.0	1.511	
11		16.99	104.7	0.209	
12	Linalool	18.05	1614.5	3.218	Directive 2003/15EC (7th)
13	Terpinene-4-ol	19.33	497.2	0.991	
14	beta-Caryophyllene	19.41	919.1	1.832	
15		20.65	90.7	0.181	
16		20.69	79.8	0.159	
17	alpha-Humulene	20.83	612.0	1.220	
18		20.89	92.9	0.185	
19		20.95	28.1	0.056	
20	alpha-Terpineol	21.14	6355.3	12.666	
21		21.20	204.9	0.408	
22		21.65	208.5	0.416	
23	alpha-Selinene	21.80	575.7	1.147	
24	beta-Selinene	21.87	568.8	1.134	
25		22.40	55.4	0.110	
26		22.60	37.3	0.074	
27		22.89	159.5	0.318	
28	Geraniol	23.76	204.1	0.407	Directive 2003/15EC (7th)
29		23.81	84.6	0.169	
30		28.00	650.0	1.296	
31		29.39	237.1	0.473	
32		29.59	125.9	0.251	
33		30.41	420.9	0.839	
34		30.60	454.2	0.905	
Total			50174.8	100.000	

This data sheet was issued to the best of our knowledge and is supplied without warranty for its correctness or accuracy.