

Certificate of Analysis

Product: **Melissa officinalis organic 7632**

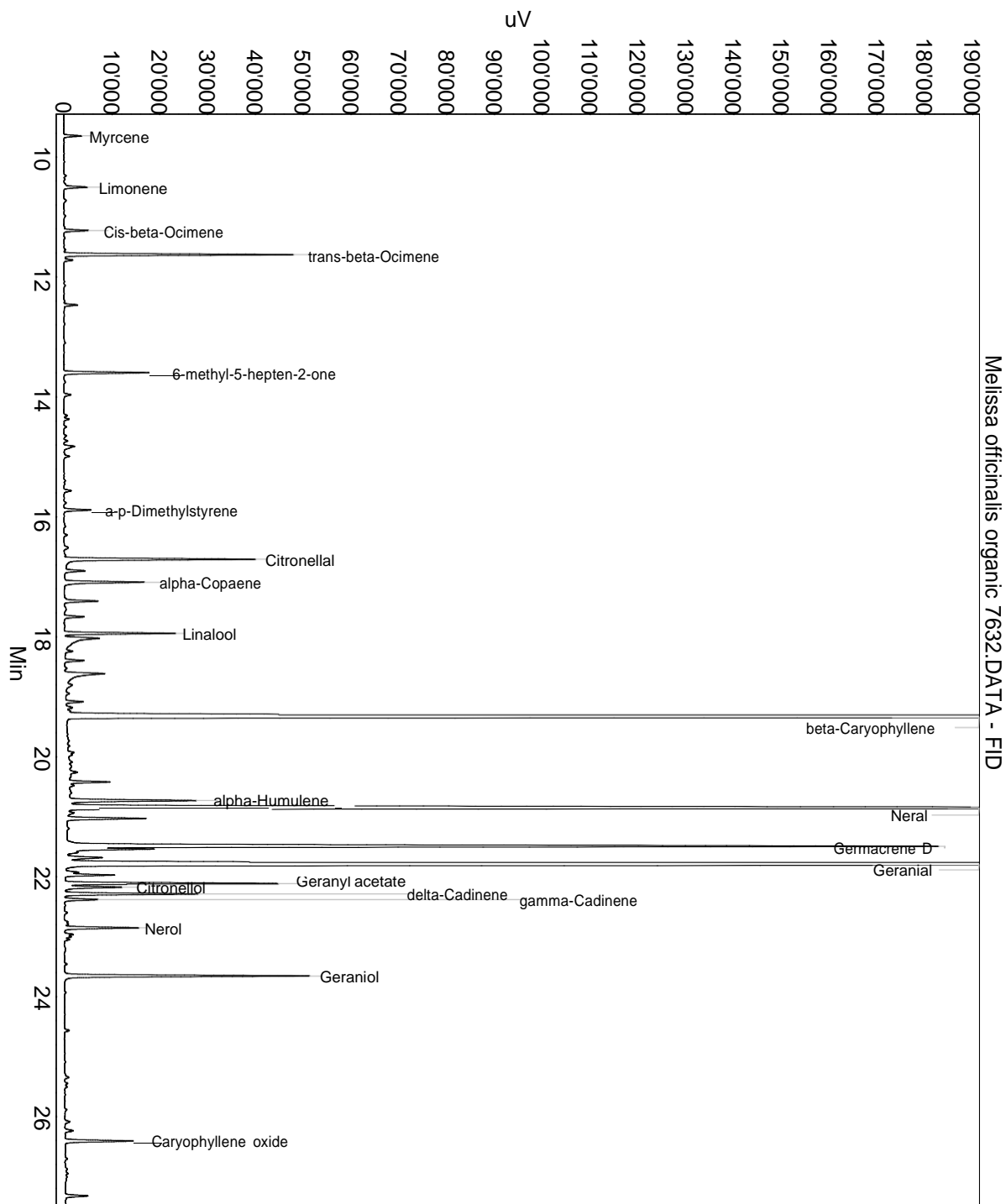
Lot: 7632

Date of analysis: 08.10.2020 21:58:40

System: GC-430 FID

Column: BGB Wax 60m / 0.25mm / 0.25um

Method: 180306 essential basis 60min



This data sheet was issued to the best of our knowledge and is supplied without warranty for its correctness or accuracy.

Certificate of Analysis

Product: **Melissa officinalis organic 7632**

Lot: 7632

Date of analysis: 08.10.2020 21:58:40

System: GC-430 FID

Column: BGB Wax 60m / 0.25mm / 0.25um

Method: 180306 essential basis 60min

Index	Name	Time [Min]	Area [uV.Min]	Area % [%]	Allergene
1	alpha-Pinene	6.95	30.5	0.046	
2	Myrcene	9.65	109.2	0.163	
3	Limonene	10.50	163.0	0.243	Directive 2003/15EC (7th)
4	Cis-beta-Ocimene	11.23	156.3	0.233	
5	trans-beta-Ocimene	11.63	1381.0	2.061	
6		11.72	56.2	0.084	
7		12.47	86.4	0.129	
8	6-methyl-5-hepten-2-one	13.60	537.1	0.802	
9		13.96	52.0	0.078	
10		14.37	29.0	0.043	
11		14.73	23.3	0.035	
12		14.82	101.8	0.152	
13		14.99	42.8	0.064	
14		15.56	53.7	0.080	
15	a-p-Dimethylstyrene	15.88	173.6	0.259	
16		16.51	39.9	0.060	
17	Citronellal	16.71	1338.6	1.998	
18		16.90	162.0	0.242	
19	alpha-Copaene	17.09	567.0	0.846	
20		17.40	232.6	0.347	
21		17.67	136.2	0.203	
22	Linalool	17.94	681.4	1.017	Directive 2003/15EC (7th)
23		18.02	522.0	0.779	
24		18.24	72.5	0.108	
25		18.39	129.5	0.193	
26		18.61	521.4	0.778	
27		18.80	99.5	0.148	
28		18.94	32.5	0.048	
29		19.08	110.4	0.165	
30		19.18	51.5	0.077	
31	beta-Caryophyllene	19.34	13743.7	20.513	
32		19.93	65.2	0.097	
33		20.26	73.1	0.109	
34		20.42	247.7	0.370	
35		20.48	33.8	0.050	
36	alpha-Humulene	20.73	899.1	1.342	
37	Neral	20.86	12047.2	17.981	(= Citral) Directive 2003/15EC (7th)
38		20.94	47.2	0.070	

This data sheet was issued to the best of our knowledge and is supplied without warranty for its correctness or accuracy.

Certificate of Analysis

Product: **Melissa officinalis organic 7632**

Lot: 7632

Date of analysis: 08.10.2020 21:58:40

System: GC-430 FID

Column: BGB Wax 60m / 0.25mm / 0.25um

Method: 180306 essential basis 60min

Index	Name	Time [Min]	Area [uV.Min]	Area % [%]	Allergene
39		21.03	527.1	0.787	
40	Germacrene D	21.49	6017.0	8.981	
41		21.54	255.8	0.382	
42		21.68	274.6	0.410	
43	Geranial	21.80	17802.8	26.572	(= Citral) Directive 2003/15EC (7th)
44		21.97	382.5	0.571	
45	Geranyl acetate	22.11	1292.2	1.929	
46	Citronellol	22.17	389.5	0.581	Directive 2003/15EC (7th)
47	delta-Cadinene	22.29	859.9	1.284	
48	gamma-Cadinene	22.38	216.3	0.323	
49	Nerol	22.85	463.6	0.692	
50		22.96	98.5	0.147	
51		23.05	33.1	0.049	
52	Geraniol	23.65	1590.6	2.374	Directive 2003/15EC (7th)
53		24.56	35.9	0.054	
54		26.09	42.2	0.063	
55		26.23	66.0	0.098	
56	Caryophyllene oxide	26.41	473.9	0.707	
57		27.32	160.3	0.239	
58		27.52	103.6	0.155	
59		27.61	36.0	0.054	
60		28.42	42.9	0.064	
61		29.00	42.2	0.063	
62		29.29	120.6	0.180	
63		29.57	138.6	0.207	
64		29.76	54.3	0.081	
65		30.00	59.2	0.088	
66		30.43	300.8	0.449	
67		31.47	63.1	0.094	
68		32.45	205.3	0.306	
Total			66998.5	100.000	

This data sheet was issued to the best of our knowledge and is supplied without warranty for its correctness or accuracy.