

# Certificate of Analysis

Product: **Picea abies organic 8002**

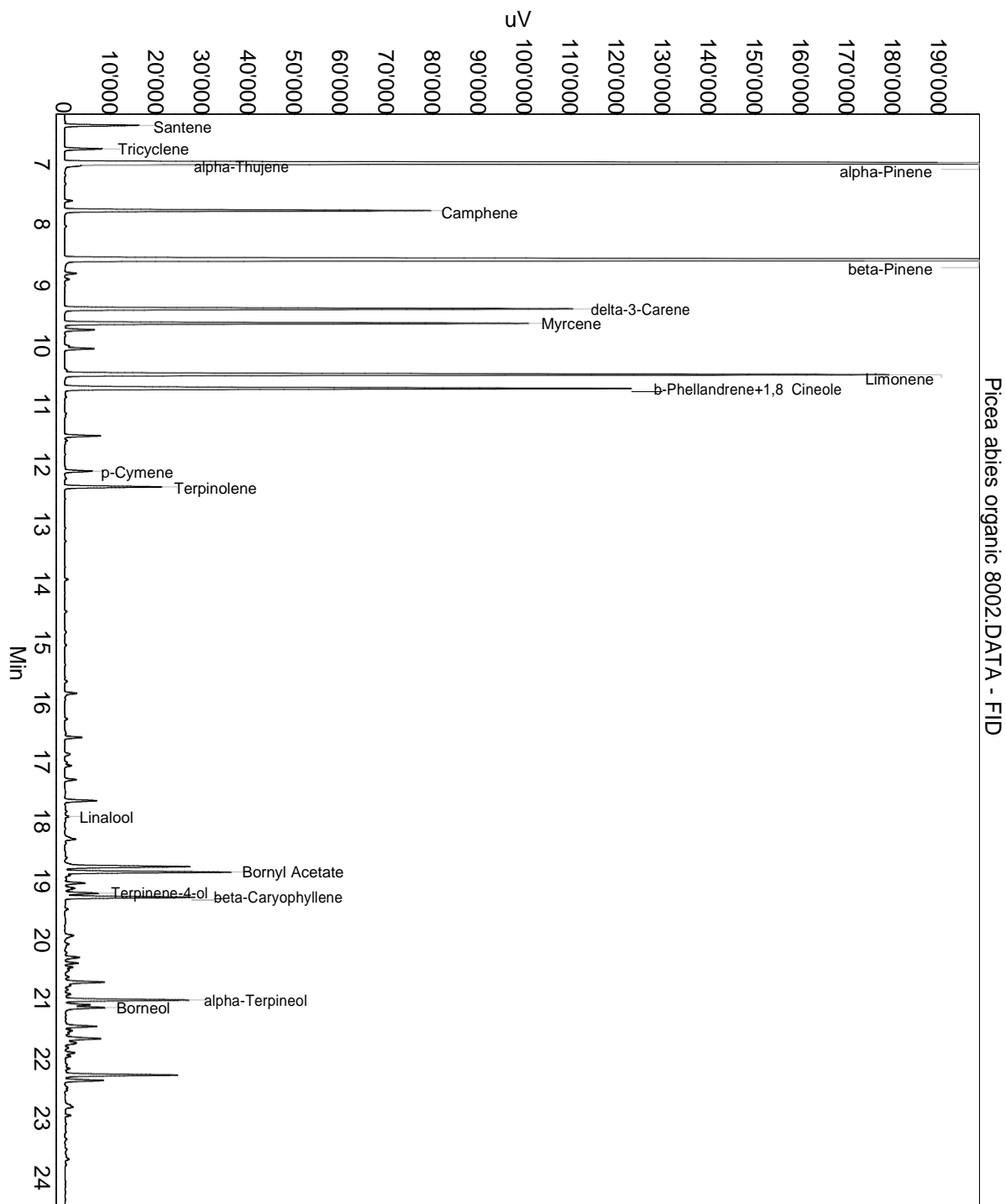
Lot: 8002

Date of analysis: 12.01.2021 15:27:53

System: GC-430 FID

Column: BGB Wax 60m / 0.25mm / 0.25um

Method: 180306 essential basis 60min



This data sheet was issued to the best of our knowledge and is supplied without warranty for its correctness or accuracy.

## Certificate of Analysis

Product: **Picea abies organic 8002**

Lot: 8002

Date of analysis: 12.01.2021 15:27:53

System: GC-430 FID

Column: BGB Wax 60m / 0.25mm / 0.25um

Method: 180306 essential basis 60min

Index	Name	Time [Min]	Area [uV.Min]	Area % [%]	Allergene
1	Santene	6.35	441.2	0.730	
2	Tricyclene	6.74	237.3	0.392	
3	alpha-Pinene	6.99	14829.0	24.517	
4	alpha-Thujene	7.02	86.3	0.143	
5		7.61	49.9	0.082	
6	Camphene	7.78	2333.7	3.858	
7	beta-Pinene	8.61	15870.6	26.239	
8		8.83	77.2	0.128	
9		8.93	31.9	0.053	
10	delta-3-Carene	9.43	3301.5	5.459	
11	Myrcene	9.67	2840.4	4.696	
12		9.78	197.4	0.326	
13		10.06	32.4	0.054	
14		10.10	197.2	0.326	
15	Limonene	10.53	5617.2	9.287	Directive 2003/15EC (7th)
16	b-Phellandrene+1,8 Cineole	10.77	3990.3	6.597	
17		11.56	235.9	0.390	
18		11.64	22.0	0.036	
19	p-Cymene	12.16	184.0	0.304	
20	Terpinolene	12.42	645.2	1.067	
21		13.97	25.5	0.042	
22		15.89	92.7	0.153	
23		16.63	116.3	0.192	
24		16.91	51.6	0.085	
25		17.10	38.1	0.063	
26		17.34	83.9	0.139	
27		17.69	236.8	0.391	
28	Linalool	17.96	29.0	0.048	Directive 2003/15EC (7th)
29		18.31	27.8	0.046	
30		18.34	82.7	0.137	
31		18.75	16.6	0.027	
32		18.80	938.9	1.552	
33	Bornyl Acetate	18.89	1123.0	1.857	
34		18.94	25.9	0.043	
35		19.07	134.8	0.223	
36		19.16	87.2	0.144	
37	Terpinene-4-ol	19.25	226.2	0.374	
38	beta-Caryophyllene	19.31	883.5	1.461	

This data sheet was issued to the best of our knowledge and is supplied without warranty for its correctness or accuracy.

## Certificate of Analysis

Product: **Picea abies organic 8002**

Lot: 8002

Date of analysis: 12.01.2021 15:27:53

System: GC-430 FID

Column: BGB Wax 60m / 0.25mm / 0.25um

Method: 180306 essential basis 60min

Index	Name	Time [Min]	Area [uV.Min]	Area % [%]	Allergene
39		19.95	94.7	0.157	
40		20.10	25.8	0.043	
41		20.32	111.3	0.184	
42		20.42	85.3	0.141	
43		20.49	53.0	0.088	
44		20.54	37.3	0.062	
45		20.65	30.2	0.050	
46		20.74	300.8	0.497	
47		20.79	41.5	0.069	
48		20.87	20.7	0.034	
49		20.94	41.3	0.068	
50	alpha-Terpineol	21.04	862.0	1.425	
51		21.12	172.2	0.285	
52	Borneol	21.16	313.5	0.518	
53		21.48	245.5	0.406	
54		21.55	56.3	0.093	
55		21.60	28.4	0.047	
56		21.69	309.8	0.512	
57		21.76	115.1	0.190	
58		21.84	25.3	0.042	
59		21.92	76.0	0.126	
60		21.98	34.6	0.057	
61		22.19	23.5	0.039	
62		22.30	777.8	1.286	
63		22.39	263.0	0.435	
64		22.83	98.5	0.163	
65		22.98	39.3	0.065	
66		29.31	53.2	0.088	
67		29.60	43.6	0.072	
68		29.69	454.3	0.751	
69		29.79	19.4	0.032	
70		30.22	110.3	0.182	
71		30.45	79.4	0.131	
Total			60483.9	100.000	

This data sheet was issued to the best of our knowledge and is supplied  
without warranty for its correctness or accuracy.