

Certificate of Analysis

Product: **Picea mariana organic 6701**

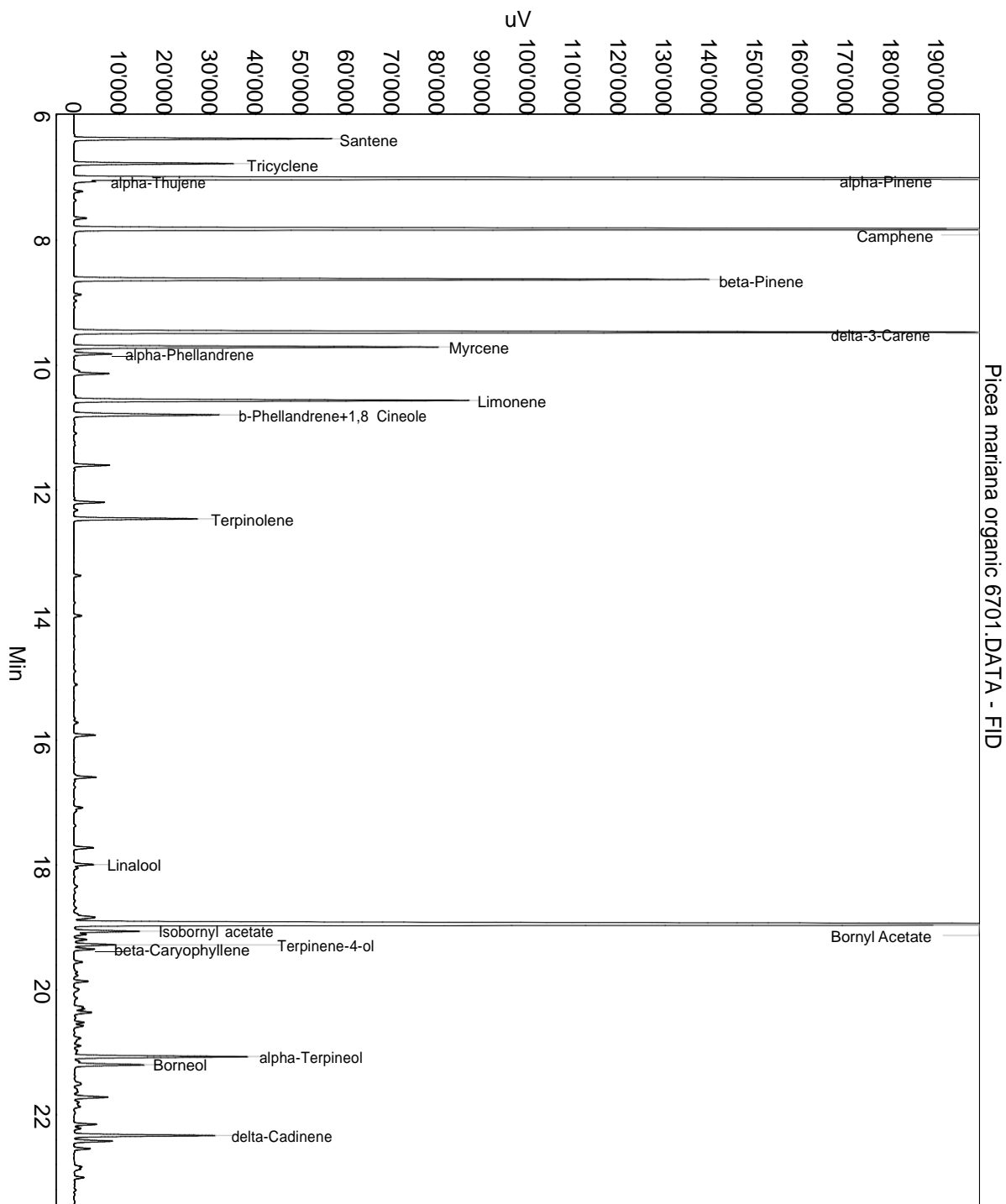
Lot: 6701

Date of analysis: 22.04.2020 17:46:30

System: GC-430 FID

Column: BGB Wax 60m / 0.25mm / 0.25um

Method: 180306 essential basis 60min



This data sheet was issued to the best of our knowledge and is supplied without warranty for its correctness or accuracy.

Certificate of Analysis

Product: **Picea mariana organic 6701**

Lot: 6701

Date of analysis: 22.04.2020 17:46:30

System: GC-430 FID

Column: BGB Wax 60m / 0.25mm / 0.25um

Method: 180306 essential basis 60min

Index	Name	Time [Min]	Area [uV.Min]	Area % [%]	Allergene
1	Santene	6.37	1507.2	2.345	
2	Tricyclene	6.77	987.9	1.537	
3	alpha-Pinene	7.01	12154.1	18.913	
4	alpha-Thujene	7.06	34.2	0.053	
5		7.22	55.9	0.087	
6		7.65	83.9	0.131	
7	Camphene	7.82	9656.0	15.026	
8	beta-Pinene	8.63	4229.5	6.582	
9		8.87	48.4	0.075	
10	delta-3-Carene	9.47	6193.3	9.638	
11	Myrcene	9.71	2260.6	3.518	
12	alpha-Phellandrene	9.82	251.8	0.392	
13		10.13	196.7	0.306	
14	Limonene	10.56	2626.5	4.087	Directive 2003/15EC (7th)
15	b-Phellandrene+1,8 Cineole	10.80	1104.0	1.718	
16		11.60	245.3	0.382	
17		12.20	205.3	0.320	
18		12.32	26.2	0.041	
19	Terpinolene	12.46	829.4	1.291	
20		13.37	50.8	0.079	
21		14.01	59.6	0.093	
22		15.72	30.5	0.047	
23		15.92	159.7	0.248	
24		16.60	164.2	0.256	
25		17.08	61.5	0.096	
26		17.73	149.2	0.232	
27	Linalool	18.00	141.0	0.219	Directive 2003/15EC (7th)
28		18.05	32.7	0.051	
29		18.81	30.7	0.048	
30		18.84	214.5	0.334	
31	Bornyl Acetate	18.96	13419.0	20.881	
32	Isobornyl acetate	19.06	436.8	0.680	
33		19.11	80.9	0.126	
34		19.20	99.1	0.154	
35	Terpinene-4-ol	19.28	293.2	0.456	
36	beta-Caryophyllene	19.35	144.6	0.225	
37		19.56	62.8	0.098	
38		19.86	97.0	0.151	

This data sheet was issued to the best of our knowledge and is supplied without warranty for its correctness or accuracy.

Certificate of Analysis

Product: Picea mariana organic 6701

Lot: 6701

Date of analysis: 22.04.2020 17:46:30

System: GC-430 FID

Column: BGB Wax 60m / 0.25mm / 0.25um

Method: 180306 essential basis 60min

Index	Name	Time [Min]	Area [uV.Min]	Area % [%]	Allergene
39		19.99	57.0	0.089	
40		20.13	37.9	0.059	
41		20.27	56.6	0.088	
42		20.31	75.3	0.117	
43		20.36	152.1	0.237	
44		20.45	15.9	0.025	
45		20.52	70.4	0.110	
46		20.58	75.9	0.118	
47		20.77	78.0	0.121	
48		20.90	48.3	0.075	
49		20.97	39.6	0.062	
50	alpha-Terpineol	21.07	1187.7	1.848	
51		21.15	35.0	0.055	
52	Borneol	21.20	517.6	0.805	
53		21.51	84.8	0.132	
54		21.63	50.2	0.078	
55		21.72	251.5	0.391	
56		21.80	20.3	0.032	
57		22.15	151.1	0.235	
58		22.22	51.0	0.079	
59	delta-Cadinene	22.33	983.4	1.530	
60		22.42	269.4	0.419	
61		22.54	113.3	0.176	
62		22.83	62.0	0.097	
63		22.87	43.6	0.068	
64		23.01	73.3	0.114	
65		23.68	56.7	0.088	
66		23.74	111.2	0.173	
67		25.25	31.1	0.048	
68		25.75	36.5	0.057	
69		26.99	33.5	0.052	
70		27.55	65.9	0.103	
71		27.66	44.5	0.069	
72		29.34	215.2	0.335	
73		29.63	188.1	0.293	
74		29.82	52.3	0.081	
75		30.49	402.2	0.626	

This data sheet was issued to the best of our knowledge and is supplied without warranty for its correctness or accuracy.

Certificate of Analysis

Product: **Picea mariana organic 6701**

Lot: 6701

Date of analysis: 22.04.2020 17:46:30

System: GC-430 FID

Column: BGB Wax 60m / 0.25mm / 0.25um

Method: 180306 essential basis 60min

Index	Name	Time [Min]	Area [uV.Min]	Area % [%]	Allergene
Total			64262.5	100.000	

This data sheet was issued to the best of our knowledge and is supplied without warranty for its correctness or accuracy.