

Certificate of Analysis

Product: **Pinus cembra organic 1912**

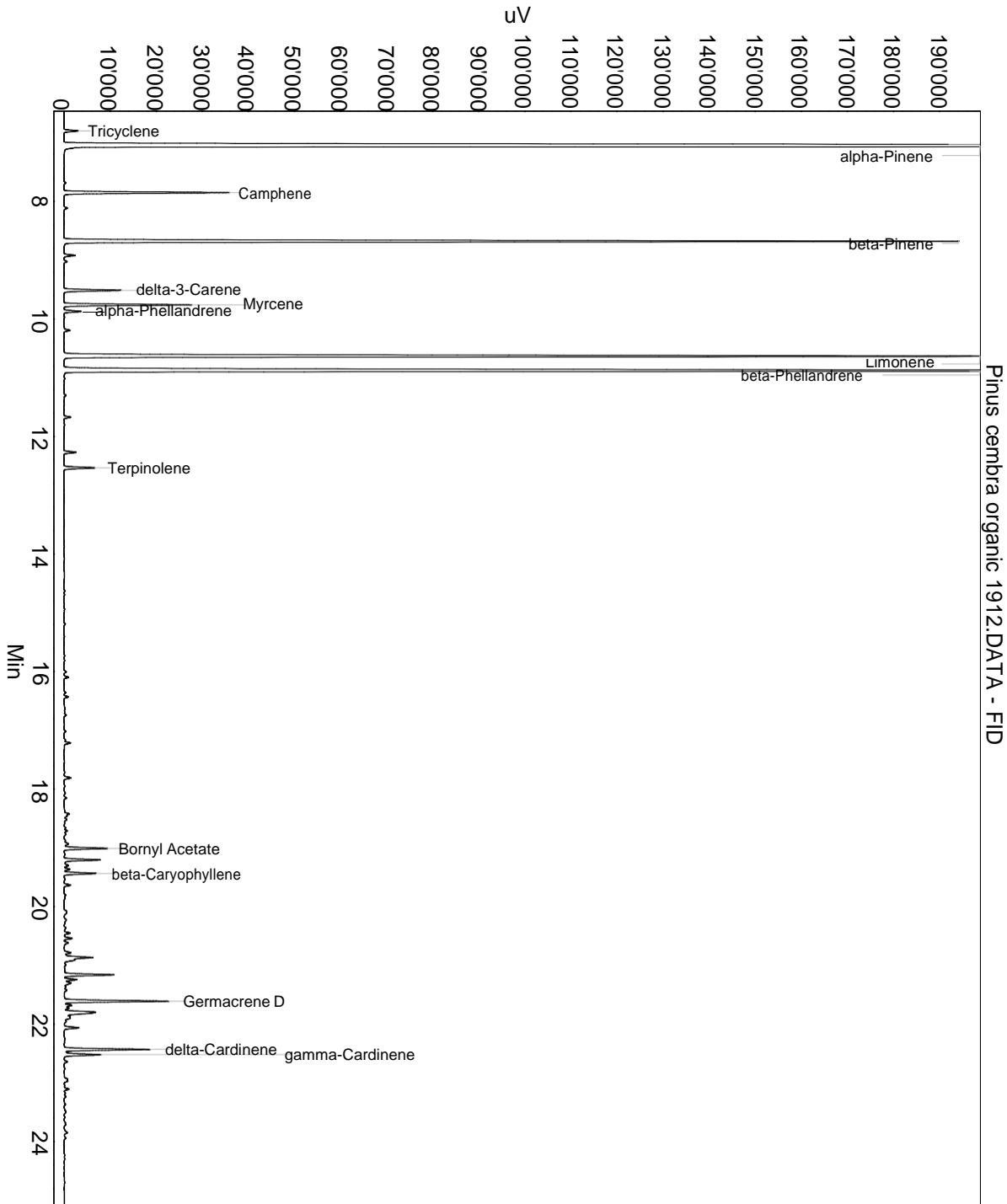
Lot: 1912

Date of analysis: 24.01.2018 15:45:52

System: GC-430 FID

Column: BGB Wax 60m / 0.25mm / 0.25um

Method: 180125 Pinus cembra



This data sheet was issued to the best of our knowledge and is supplied without warranty for its correctness or accuracy.

Certificate of Analysis

Product: **Pinus cembra organic 1912**

Lot: 1912

Date of analysis: 24.01.2018 15:45:52

System: GC-430 FID

Column: BGB Wax 60m / 0.25mm / 0.25um

Method: 180125 Pinus cembra

Index	Name	Time [Min]	Area [uV.Min]	Area % [%]	Allergene
1	Tricyclene	6.80	90.6	0.178	
2	alpha-Pinene	7.05	21633.4	42.520	
3	Camphene	7.85	1062.0	2.087	
4	beta-Pinene	8.68	5994.0	11.781	
5	delta-3-Carene	9.51	378.3	0.743	
6	Myrcene	9.76	794.1	1.561	
7	alpha-Phellandrene	9.87	113.8	0.224	
8	Limonene	10.63	6673.1	13.116	Directive 2003/15EC (7th)
9	beta-Phellandrene	10.88	10191.1	20.030	
10	Terpinolene	12.53	208.4	0.410	
11	Bornyl Acetate	19.01	289.6	0.569	
12		19.20	236.6	0.465	
13	beta-Caryophyllene	19.44	217.4	0.427	
14		20.87	280.2	0.551	
15		21.16	348.4	0.685	
16		21.24	81.4	0.160	
17		21.30	61.4	0.121	
18	Germacrene D	21.61	745.8	1.466	
19		21.68	89.5	0.176	
20		21.80	353.0	0.694	
21		21.90	79.6	0.156	
22		22.06	105.5	0.207	
23	delta-Cardinene	22.43	585.8	1.151	
24	gamma-Cardinene	22.52	265.5	0.522	
Total			50878.4	100.000	

This data sheet was issued to the best of our knowledge and is supplied without warranty for its correctness or accuracy.