

# Certificate of Analysis

Product: **Rosmarinus officinalis organic 5491**

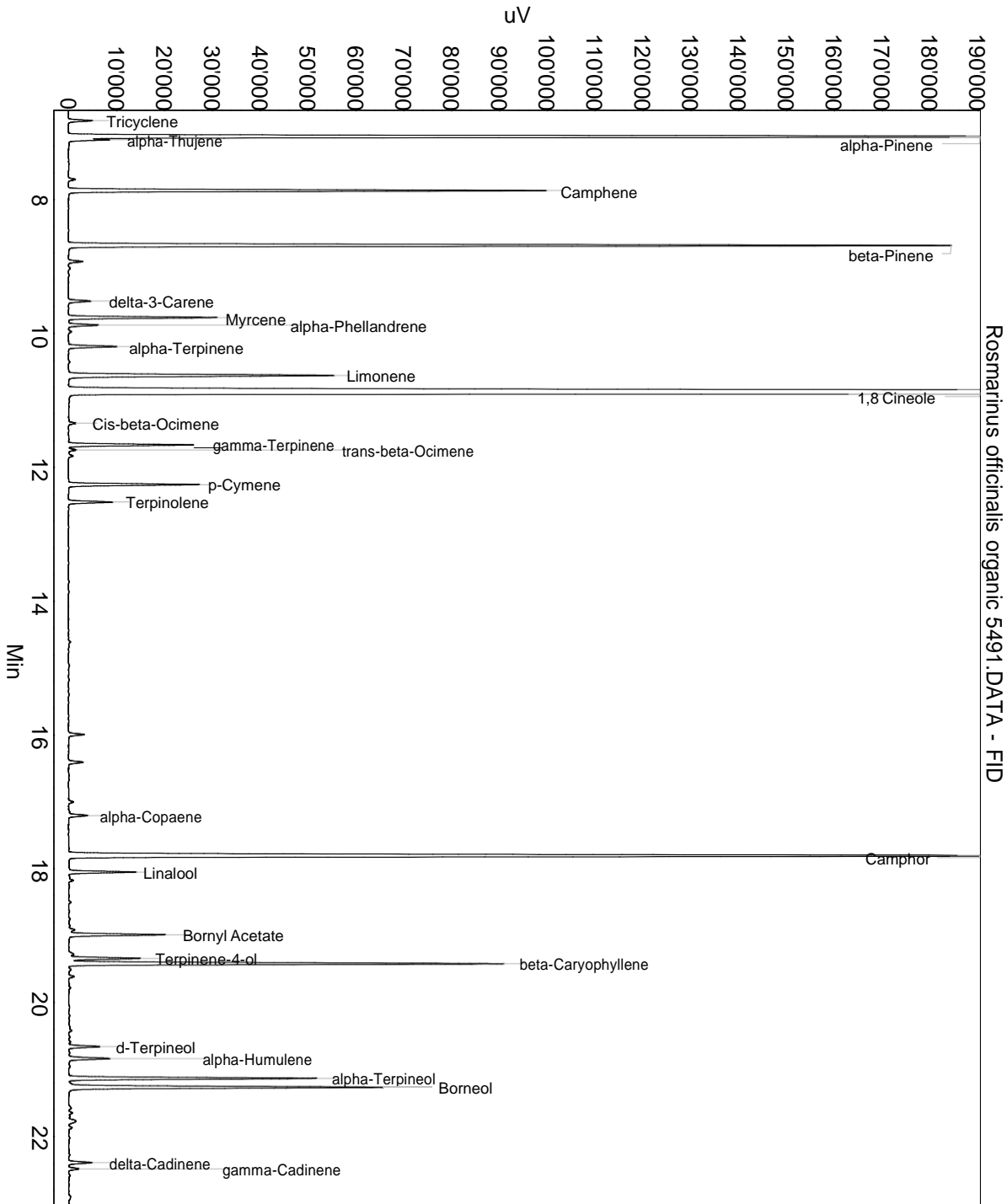
Lot: 5491

Date of analysis: 14.11.2019 14:17:18

System: GC-430 FID

Column: BGB Wax 60m / 0.25mm / 0.25um

Method: 180306 essential basis 60min



This data sheet was issued to the best of our knowledge and is supplied without warranty for its correctness or accuracy.

## Certificate of Analysis

**Product: Rosmarinus officinalis organic 5491**

Lot: 5491

Date of analysis: 14.11.2019 14:17:18

System: GC-430 FID

Column: BGB Wax 60m / 0.25mm / 0.25um

Method: 180306 essential basis 60min

Index	Name	Time [Min]	Area [uV.Min]	Area % [%]	Allergene
1	Tricyclene	6.82	146.2	0.197	
2	alpha-Pinene	7.06	8727.2	11.734	
3	alpha-Thujene	7.11	224.1	0.301	
4		7.70	44.2	0.059	
5	Camphene	7.87	2957.6	3.977	
6	beta-Pinene	8.69	5719.1	7.690	
7		8.92	88.7	0.119	
8	delta-3-Carene	9.52	145.0	0.195	
9	Myrcene	9.76	897.2	1.206	
10	alpha-Phellandrene	9.87	192.8	0.259	
11	alpha-Terpinene	10.19	314.8	0.423	
12	Limonene	10.63	1961.5	2.637	Directive 2003/15EC (7th)
13	1,8 Cineole	10.89	33329.8	44.814	
14	Cis-beta-Ocimene	11.34	47.7	0.064	
15	gamma-Terpinene	11.66	785.6	1.056	
16	trans-beta-Ocimene	11.74	45.9	0.062	
17	p-Cymene	12.26	836.2	1.124	
18	Terpinolene	12.52	284.8	0.383	
19		15.99	106.5	0.143	
20		16.41	103.6	0.139	
21		17.00	33.0	0.044	
22	alpha-Copaene	17.20	141.7	0.190	
23	Camphor	17.81	7994.9	10.750	
24	Linalool	18.05	416.2	0.560	Directive 2003/15EC (7th)
25		18.91	42.1	0.057	
26	Bornyl Acetate	18.99	638.8	0.859	
27	Terpinene-4-ol	19.34	444.3	0.597	
28	beta-Caryophyllene	19.42	2928.4	3.937	
29		19.61	36.1	0.049	
30	d-Terpineol	20.66	204.7	0.275	
31	alpha-Humulene	20.84	292.7	0.394	
32	alpha-Terpineol	21.13	1622.5	2.182	
33	Borneol	21.27	2217.1	2.981	
34		21.76	75.9	0.102	
35		21.87	23.9	0.032	
36	delta-Cadinene	22.39	156.7	0.211	
37	gamma-Cadinene	22.48	68.7	0.092	
38	Caryophyllene oxide	26.52	66.2	0.089	

This data sheet was issued to the best of our knowledge and is supplied without warranty for its correctness or accuracy.

## Certificate of Analysis

Product: **Rosmarinus officinalis organic 5491**

Lot: 5491

Date of analysis: 14.11.2019 14:17:18

System: GC-430 FID

Column: BGB Wax 60m / 0.25mm / 0.25um

Method: 180306 essential basis 60min

Index	Name	Time [Min]	Area [uV.Min]	Area % [%]	Allergene
39	Methyleugenol	26.72	11.9	0.016	
Total			74374.1	100.000	

This data sheet was issued to the best of our knowledge and is supplied without warranty for its correctness or accuracy.