

# Certificate of Analysis

Product: **Satureja montana organici 2152**

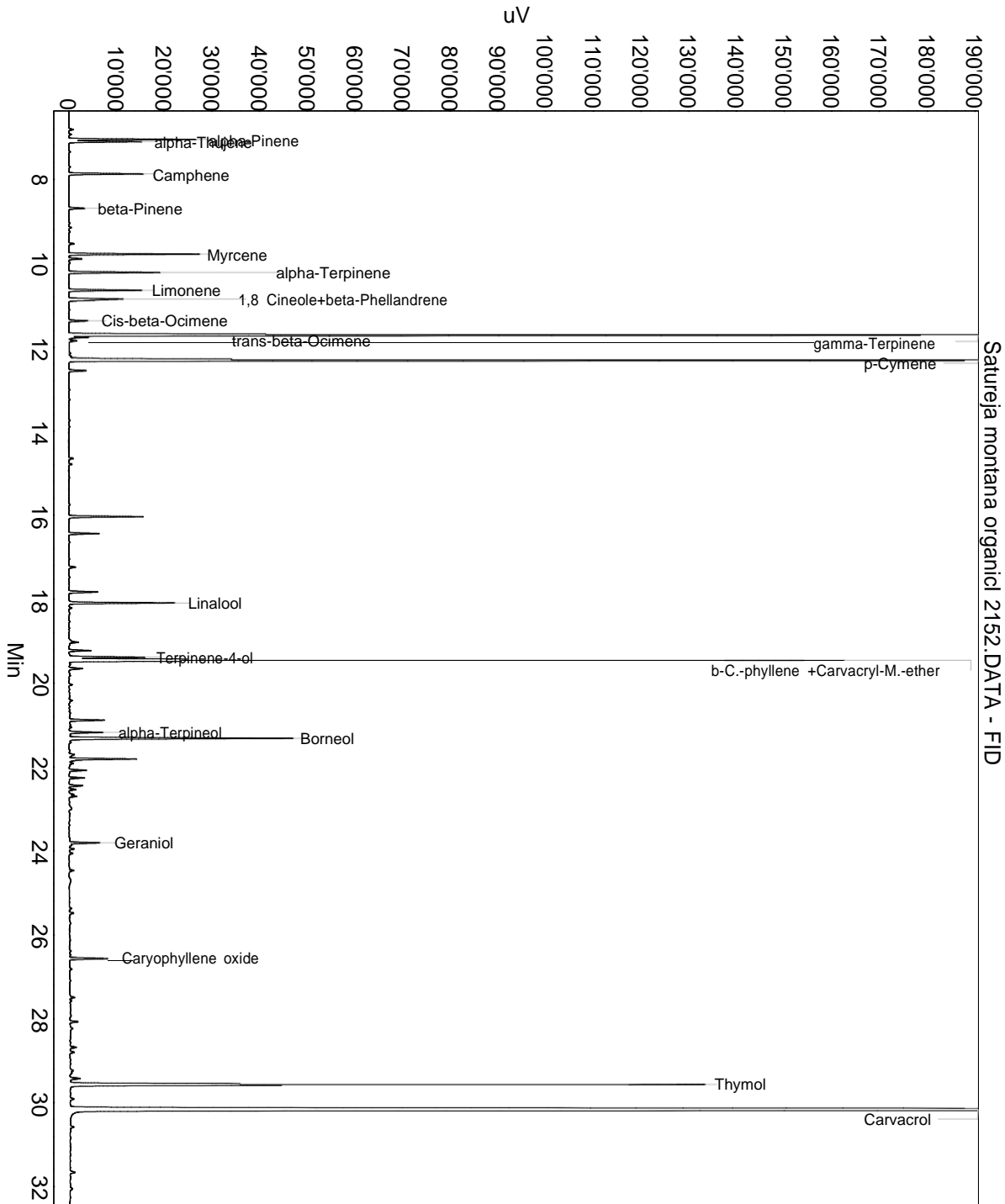
Lot: 2152

Date of analysis: 21.09.2017 17:10:36

System: GC-430 FID

Column: BGB Wax 60m / 0.25mm / 0.25um

Method: 120102 essential basis 60



This data sheet was issued to the best of our knowledge and is supplied without warranty for its correctness or accuracy.

## Certificate of Analysis

Product: **Satureja montana organici 2152**

Lot: 2152

Date of analysis: 21.09.2017 17:10:36

System: GC-430 FID

Column: BGB Wax 60m / 0.25mm / 0.25um

Method: 120102 essential basis 60

Index	Name	Time [Min]	Area [uV.Min]	Area % [%]	Allergene
1	alpha-Pinene	7.05	746.3	0.992	
2	alpha-Thujene	7.10	420.0	0.558	
3	Camphene	7.87	464.0	0.617	
4	beta-Pinene	8.69	104.2	0.138	
5	Myrcene	9.78	782.6	1.040	
6	alpha-Terpinene	10.22	572.5	0.761	
7	Limonene	10.64	466.0	0.619	Directive 2003/15EC (7th)
8	1,8 Cineole+beta-Phellandrene	10.85	482.7	0.641	
9	Cis-beta-Ocimene	11.37	122.8	0.163	
10	gamma-Terpinene	11.71	7109.3	9.447	
11	trans-beta-Ocimene	11.77	115.0	0.153	
12	p-Cymene	12.31	10165.2	13.507	
13		12.56	112.1	0.149	
14		16.04	477.4	0.634	
15		16.44	196.4	0.261	
16		17.83	213.1	0.283	
17	Linalool	18.09	660.5	0.878	Directive 2003/15EC (7th)
18		19.23	143.2	0.190	
19	Terpinene-4-ol	19.38	505.9	0.672	
20	b-C.-phyllene +Carvacryl-M.-ether	19.46	6030.2	8.013	
21		20.89	243.1	0.323	
22	alpha-Terpineol	21.18	240.2	0.319	
23	Borneol	21.32	1596.6	2.122	
24		21.81	428.6	0.569	
25		21.84	58.1	0.077	
26		22.08	124.2	0.165	
27		22.45	93.2	0.124	
28		22.54	46.4	0.062	
29	Geraniol	23.81	196.3	0.261	Directive 2003/15EC (7th)
30	Caryophyllene oxide	26.56	264.2	0.351	
31		27.49	39.2	0.052	
32		28.68	48.4	0.064	
33	Thymol	29.56	4918.9	6.536	
34	Carvacrol	30.16	37071.3	49.259	
Total			75258.0	100.000	

This data sheet was issued to the best of our knowledge and is supplied without warranty for its correctness or accuracy.